

REVISIONS			
REV	CMO	DATE	APPROVED
C	20239459CMO	07-MAY-2008	AED
D	40217002CMO	26-MAR-2025	FS

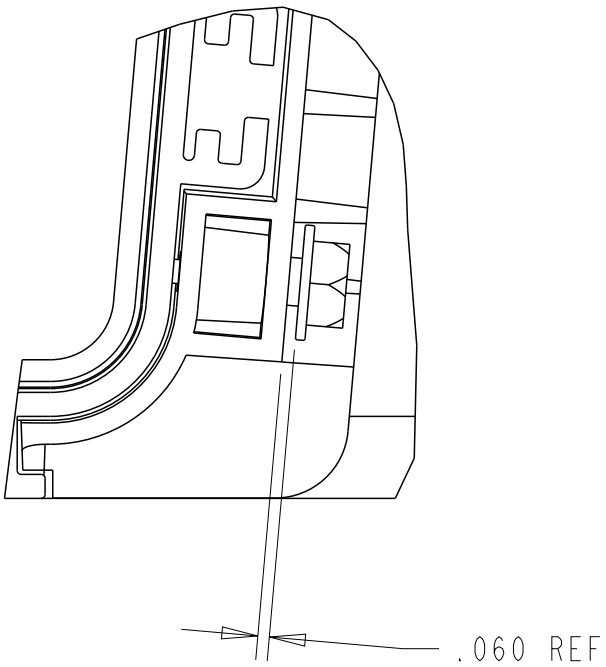
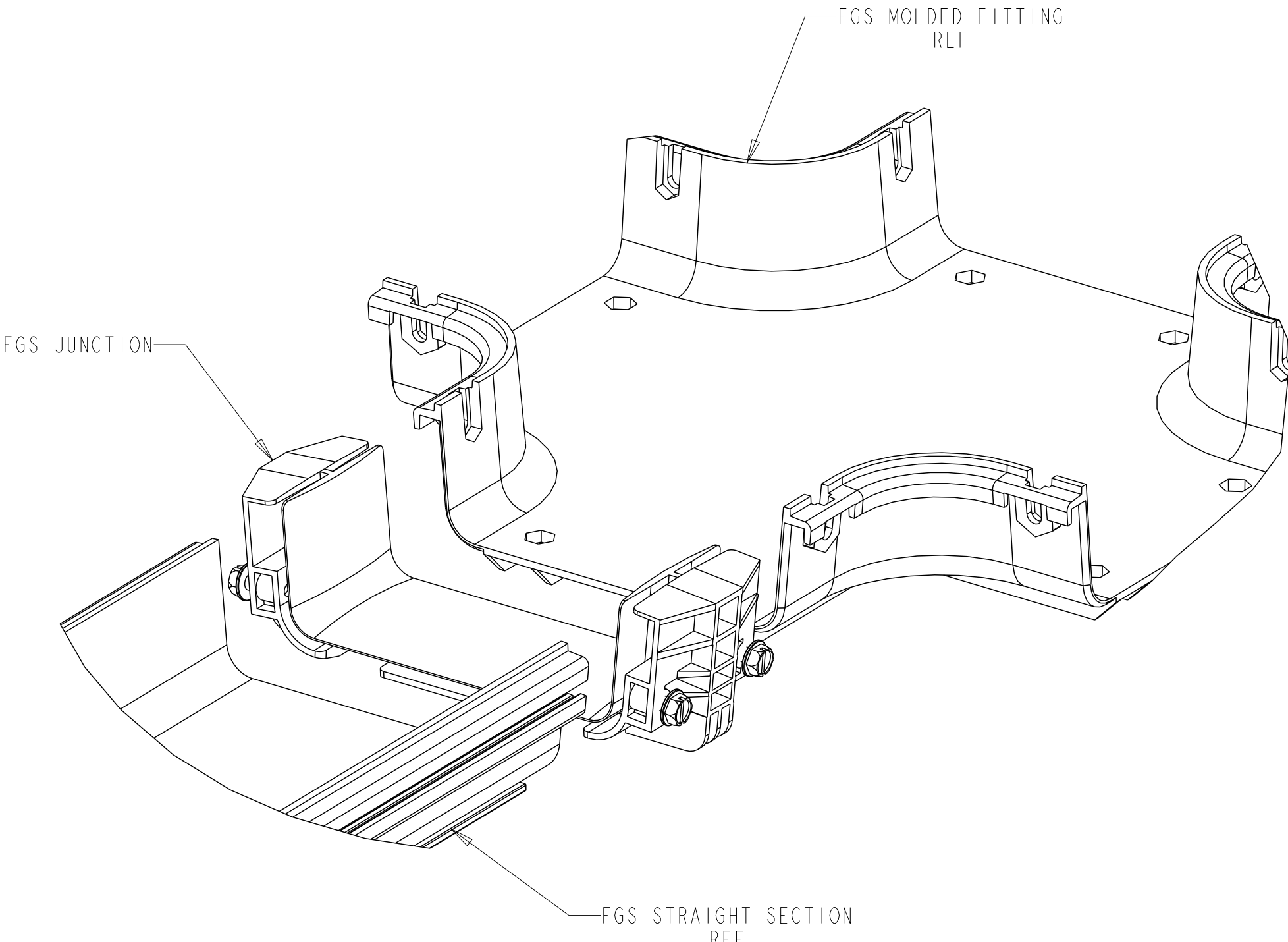
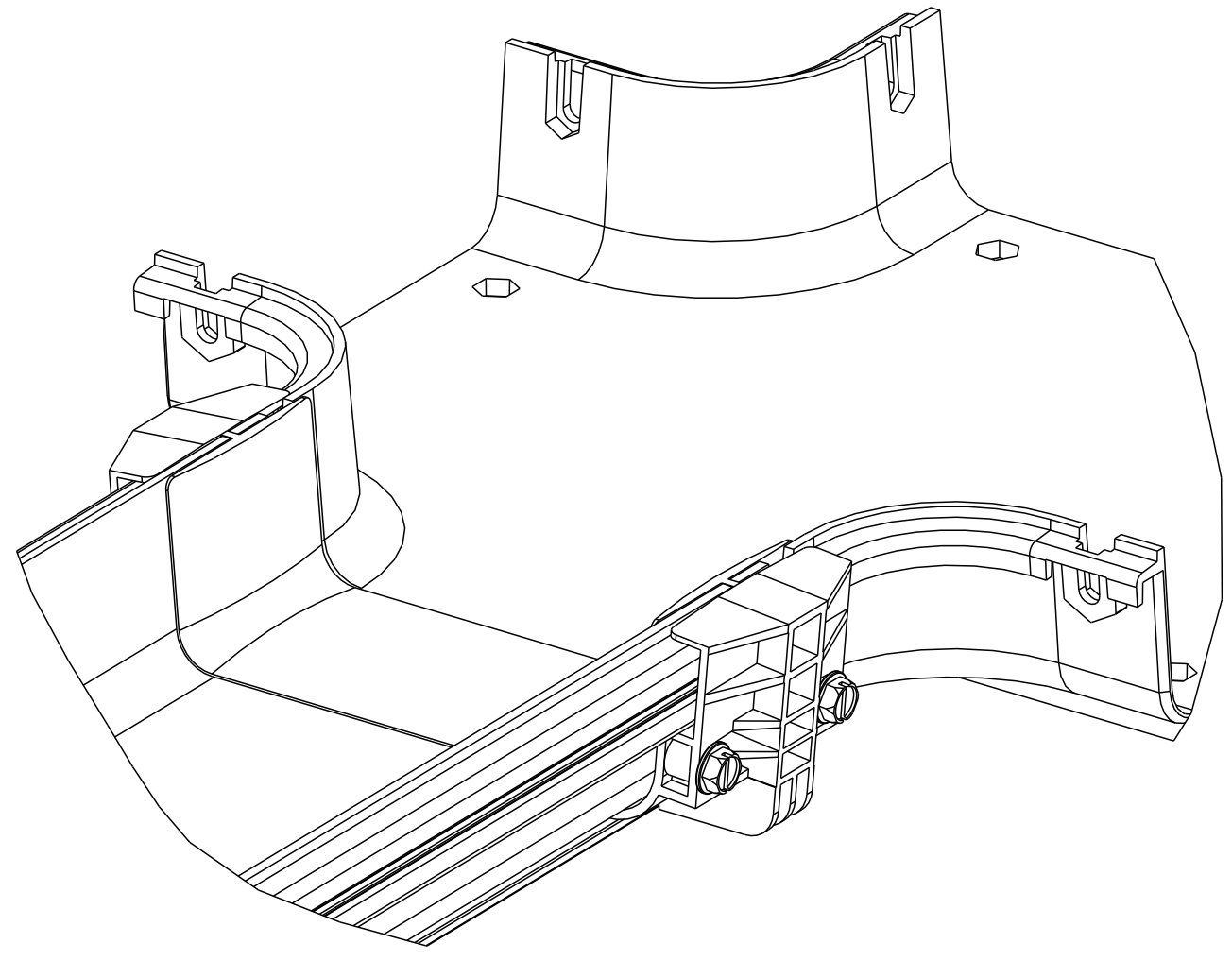


FIGURE 2  
INITIAL TIGHTENING  
TYP (4) PLACES  
SCALE 1.000

FIGURE 1



COMPLETED ASSEMBLY

INSTALLATION INSTRUCTIONS:

1. SLIDE BOTH FGS COMPONENTS INTO JUNCTION UNTIL FIRMLY SEATED AGAINST THE CENTER RIB.
2. TIGHTEN (4) SCREWS SUCH THAT THE WASHER HEAD ON SCREW IS APPROXIMATELY 1/16" FROM JUNCTION (SEE FIGURE 2). AFTER ALL SCREWS HAVE BEEN TURNED INTO 1/16" DIMENSION, GO BACK AND TIGHTEN SCREWS UNTIL THE WASHER HEAD BOTTOMS OUT ON THE JUNCTION.

FGSB-JUNC-G	BLACK
FGS-JUNC-G	YELLOW
CATALOG NUMBER	COLOR

COMMSCOPE, INC.				
DRAFTER WAYNE GIESEN		TITLE INSTALLATION DRAWING JUNCTION, FGS, 2X6		
ENGINEER JOHN VAN SCOY		SIZE A2	SCALE 0.056	DOCUMENT NO. 1171141 ADC
		CUSTOMER DRAWING		REVISION D
				SHEET 1 OF 1