

4

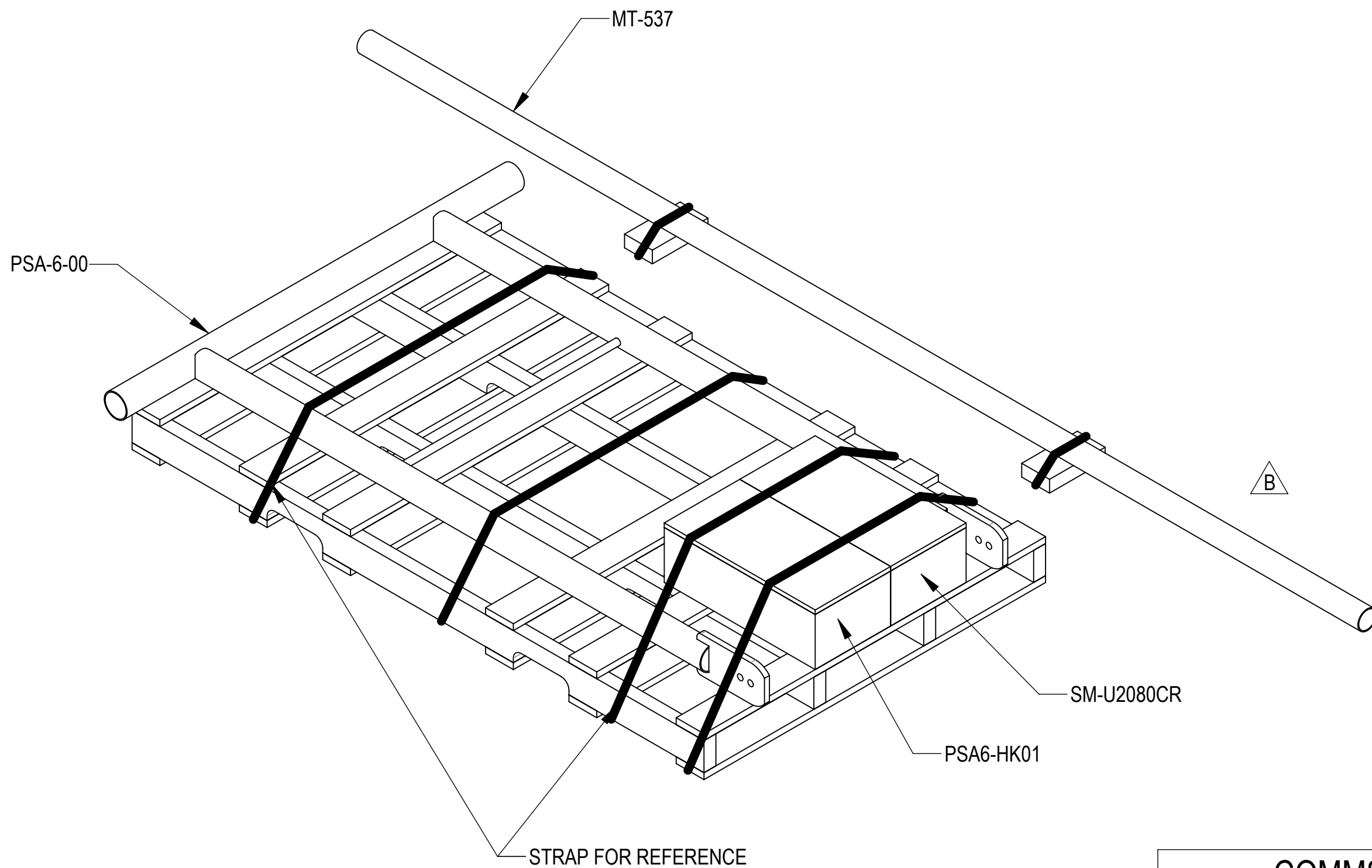
3

2

1

- 1.0 GENERAL NOTES
 - 1.1 ALL METRIC DIMENSIONS ARE IN BRACKETS [X. X]
 - 1.2 FOR PATENT INFO: <https://www.cs-pat.com>
- 2.0 DESIGN NOTES
 - 2.1 ANY HAZARDS OR OBSTRUCTIONS TO THE CLIMBING FACILITY AND SAFETY CLIMB MUST BE IDENTIFIED PRIOR TO INSTALLING THE APPURTENANCE. ADDITIONAL PRODUCTS MAY BE REQUIRED TO MAINTAIN THE INTEGRITY OF THE SAFETY CLIMB. DURING INSTALLATION, TEMPORARY AND/OR PERMANENT PRECAUTIONARY MEASURES SHOULD BE TAKEN TO PRESERVE THE CLIMBING FACILITY AND/OR SAFETY CLIMB.
- 3.0 MANUFACTURING/SPECIAL REQUIREMENTS
 - 3.1 TIGHTEN ALL BOLTS SECURING FLAT PLATES BY THE TURN-OF-NUT METHOD. TIGHTEN ALL U-BOLTS USING TURN-OF-NUT METHOD WITH ATTENTION TO LEAVE EQUAL DISTANCE AND EQUAL FORCE ON EACH LEG OF THE U-BOLT.
- 4.0 TEST
- 5.0 PACKAGING
 - 5.1 PACKAGING SHALL MEET COMMSCOPE REQUIREMENTS PER DOCUMENT IS-PL-3005.
 - 5.2 PRINTED DOCUMENT TO BE PLACED INSIDE POLYBAG AND THEN IN SHIPPING CONTAINER.
 - 5.3 EXTRA HARDWARE MAY BE SUPPLIED, BAGGED AND SHIPPED.

REVISIONS			
REV.	DESCRIPTION	DATE	APPROVED
A	INITIAL RELEASE	JL1183 20SEP24	CB1094 40205060CMO
B	ADDED PACK VIEW; ADDED XP-R(ITEM 9) & MT-537(ITEM 10)	JL1183 23SEP24	CB1094 40205060CMO



COMMSCOPE, INC. OF NORTH CAROLINA												
TOLERANCES					SAP MATERIAL MASTER							
1 PLACE .X[X] ± 0.2[6.3]			3 PLACE .XXX[X] ± 0.060[1.5]			MTC-PSA6						
2 PLACE .XX[X] ± 0.12[3.0]			ANGLES ± 2°									
FINISH					MATERIAL							
					6' SIDE ARM							
UNLESS OTHERWISE SPECIFIED DIMENSIONS ARE IN INCHES INTERPRET PER ANSI Y 14.5M-1994					NAME		DATE		SCALE: 1:10 DOCUMENT NO.: MTC-PSA6			
					CE JL1183		20SEP24					
					RW JL1183		09/29/2024					
					AD CB1094		09/29/2024					
RE JL1183		09/29/2024		ECN 40205060CMO								
SIZE		Auth Group		INSL		MODEL			DRAWING			
C						VERSION			STATUS			
							01			RE A 01 RE B		
										SHEET 1 OF 2		

DENSITY		lbs/in ³
MASS	289.05	lbs
VOLUME	1020.70	in ³
SURFACE AREA	11004.44	in ²
HEIGHT	50.0"	
LENGTH	126.0"	
WIDTH	11.5"	

4

3

2

1

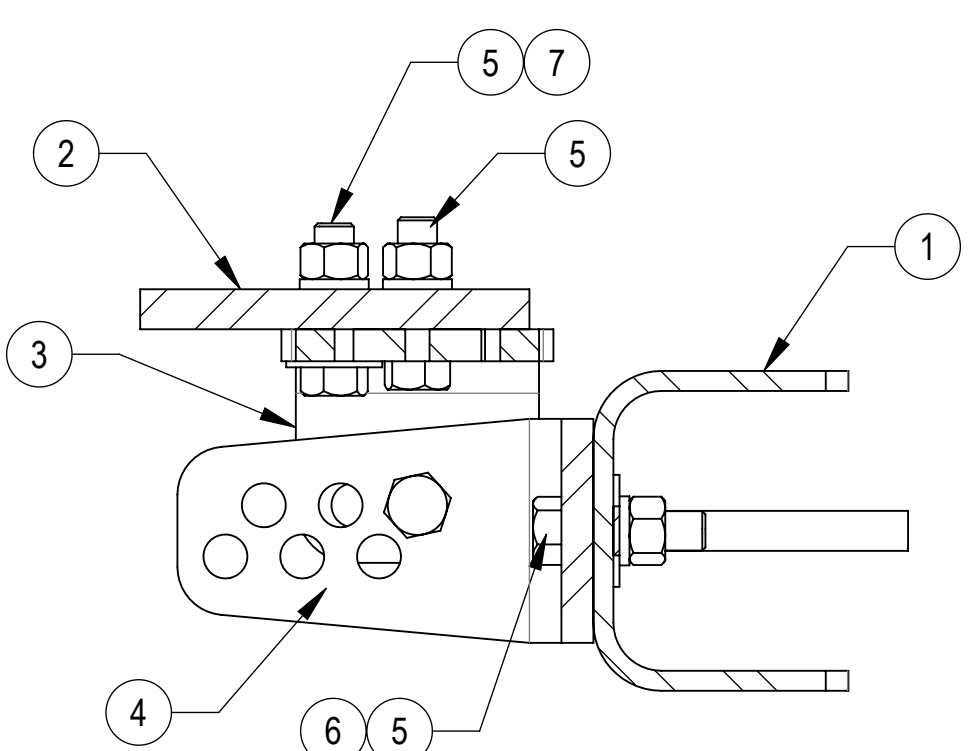
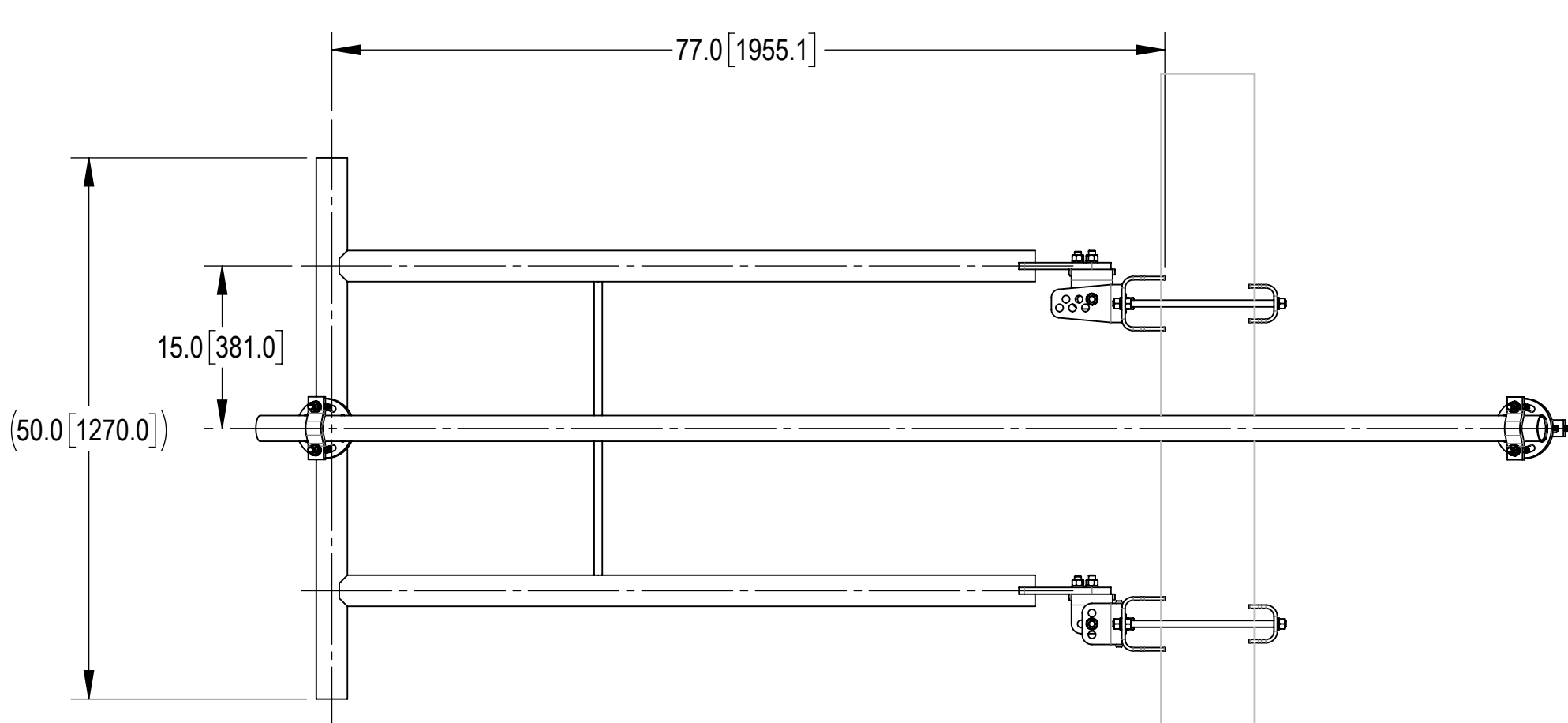
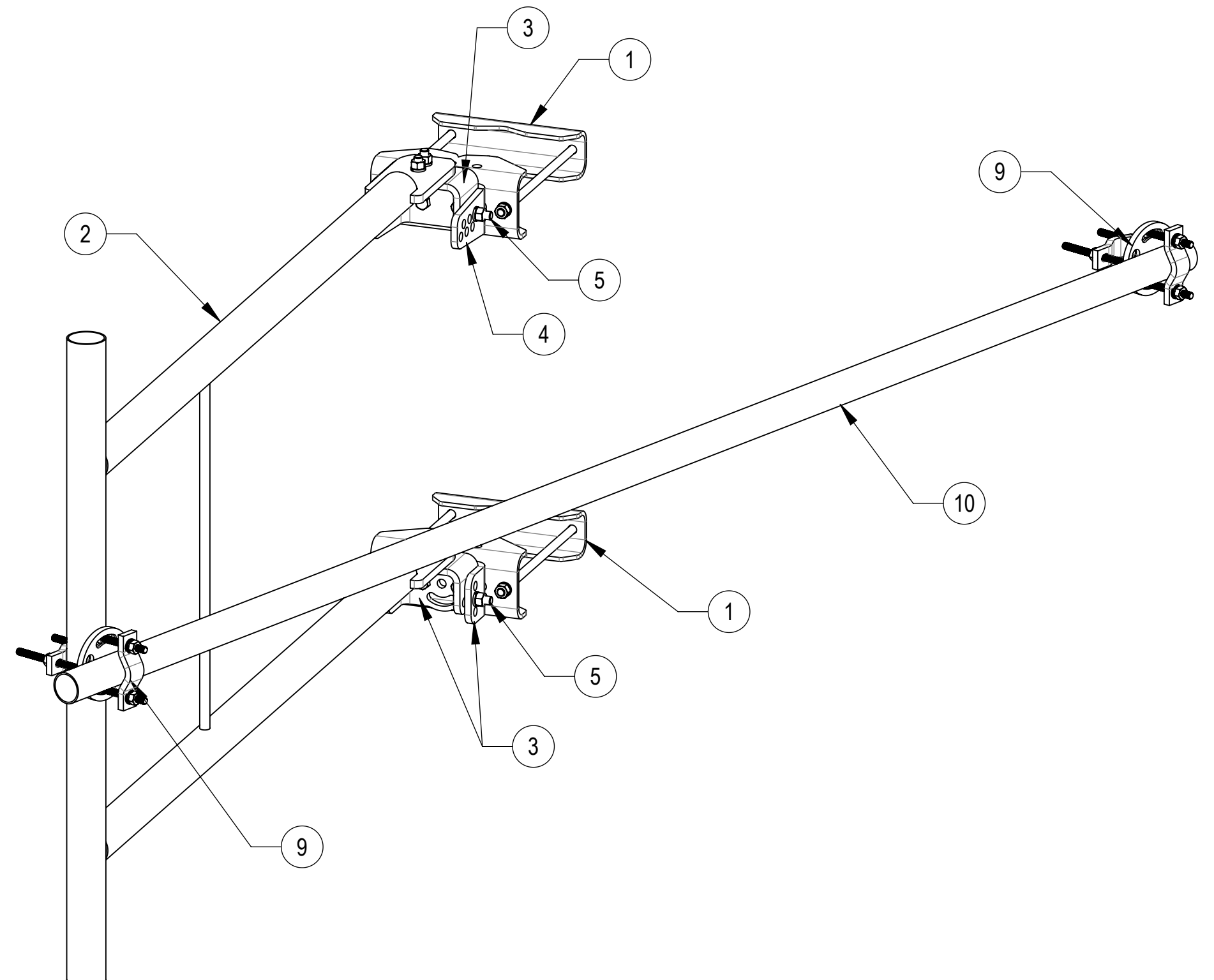
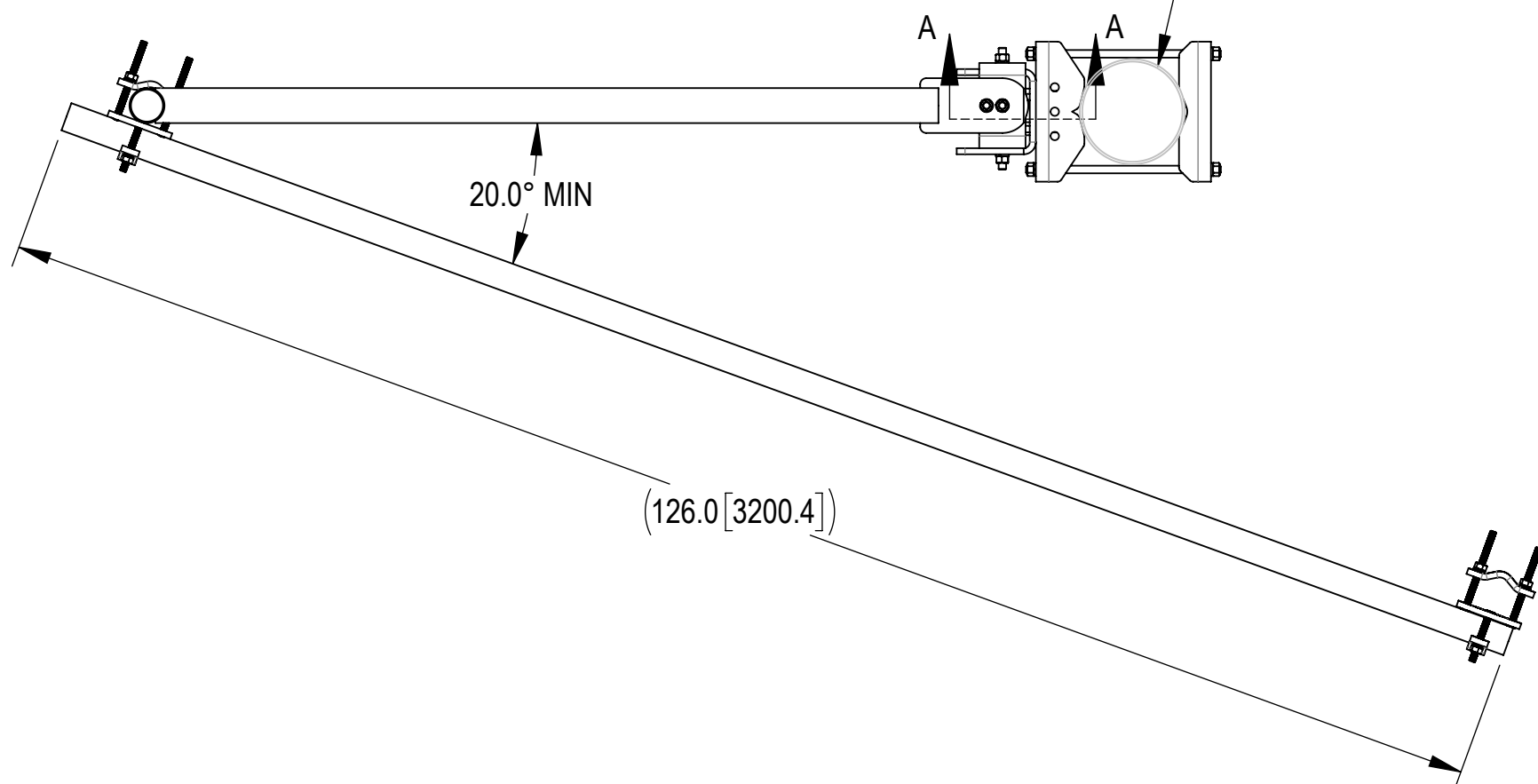
4

3

2

1

FIT UP TO 8.0" LEG
(NOT INCLUDED IN THIS KIT)



SECTION A-A
SCALE 1 : 3

COMPONENT PART NUMBERS PROVIDED FOR ASSEMBLY PURPOSES;
INDIVIDUAL COMPONENTS MAY BE SHIPPED AS PARTS WITHIN AN INCLUDED KIT.

ITEM	PART NO.	DESCRIPTION	QTY.	WEIGHT	NOTE NO.
1	SM-U2080	UNIVERSAL SADDLE MOUNT	1	20.33 LBS	
2	PSA-6-00	WELDMENT, STANDOFF ARM	1	66.91 LBS	
3	SFV02	SFV AZIMUTH BRACKET	3	5.91 LBS	
4	SFV03	SFV TAPER BRACKET	1	7.49 LBS	
5	GB-05225	5/8" X 2-1/4" GALV BOLT KIT	12	0.28 LBS	
6	GW-05	5/8" GALV FLAT WASHER, 1.70D	4	0.06 LBS	
7	SWF-05	5/8" SST, FLATWASHER 18-8, .687X1.5X.078	2	0.04 LBS	
9	XP-R	CROSSOVER PLATE, ROUND, UP TO 3.5" OD	2	6.20 LBS	
10	MT-537	Ø 2.375" OD X 126" PIPE	1	30.45 LBS	

B

COMMSCOPE, INC. OF NORTH CAROLINA

TITLE				
6' SIDE ARM				
SIZE	SCALE	DOCUMENT NO.		
C	1:14	MTC-PSA6		
DRAWING				SHEET
VERSION	STATUS	REVISION	2 OF 2	
01	RE	B		

© 2024 CommScope, Inc. Confidential

4

3

2

1