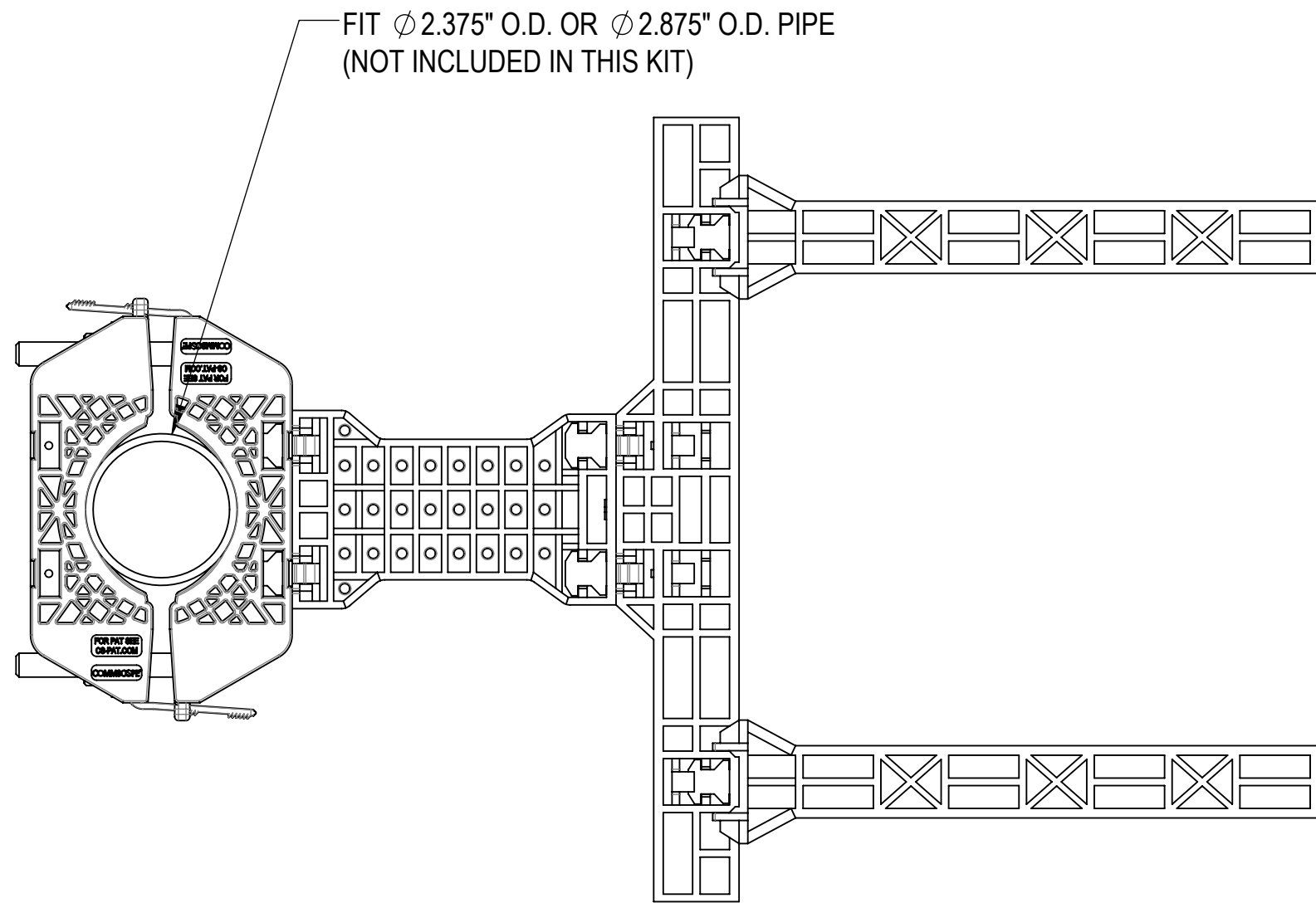
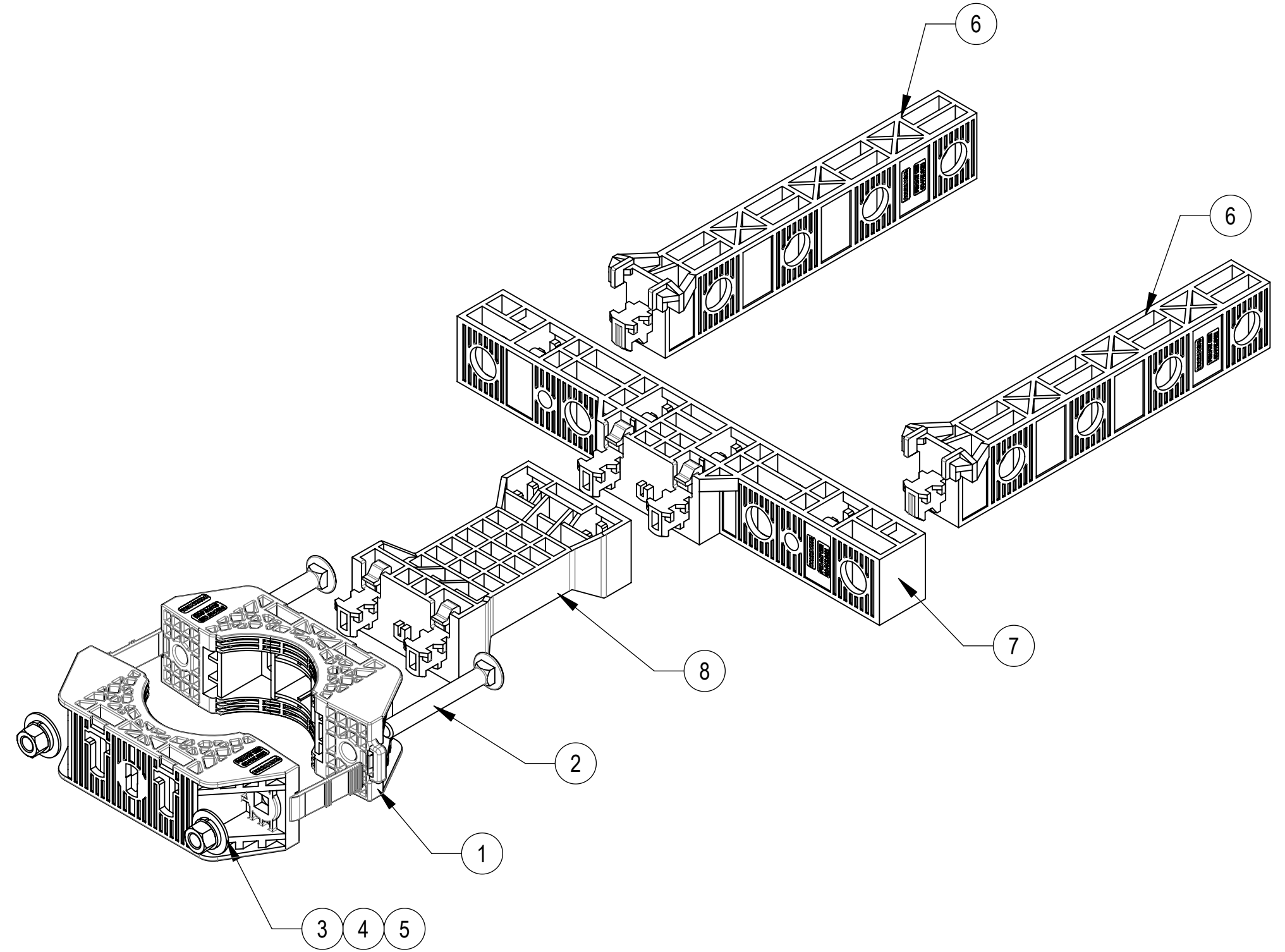


- 1.0 GENERAL NOTES
  - 1.1 ALL METRIC DIMENSIONS ARE IN BRACKETS [X.X]
  - 1.2 FEATURES CRITICAL TO QUALITY ARE INDICATED IN ROUNDED BOX (X.X)
- 2.0 DESIGN NOTES
- 3.0 MANUFACTURING/SPECIAL REQUIREMENTS
  - 3.1 TIGHTEN ALL BOLTS SECURING FLAT PLATES BY THE TURN-OF-NUT METHOD.
- 4.0 TEST
- 5.0 PACKAGING
  - 5.1 PACKAGING MUST BE AGREED TO IN WRITING BY COMMSCOPE PRIOR TO MASS-PRODUCTION APPROVAL.
  - 5.2 PARTS ARE TO BE PACKAGING IN A MANNER OT PREVENT DAMAGE DURING SHIPMENT & STORAGE.
  - 5.3 PACKAGING TO ADHERE TO ALL COMMSCOPE, LOCAL & FOREIGN (WHERE APPLICABLE) SHIPPING REQUIREMENTS.
  - 5.4 PACKAGING & PARTS TO BE FREE OF ALL CONTAMINANTS INCLUDING PAPER FROM BOX, DIRT, DUST, OILS, MOLD RELEASE, DETERGENT AND ALL OTHER FOREIGN MATERIALS.

REVISIONS			
REV.	DESCRIPTION	DATE	APPROVED
A	INITIAL RELEASE	JL1183 14JUN24	JX1030 40196238CMO



ASSEMBLY TOP VIEW



INSTALLATION ASSEMBLY

COMPONENT PART NUMBERS PROVIDED FOR ASSEMBLY PURPOSES; INDIVIDUAL COMPONENTS MAY BE SHIPPED AS PARTS WITHIN AN INCLUDED KIT.

ITEM NO.	PART NUMBER	DESCRIPTION	QTY.	WEIGHT
1	PGCS-1000	CLAMP,FRONT-REAR, POLYMER 4CP	2	0.32 LBS
2	9615-15	BOLT,CARRIAGE,3/8-16,3,STL GALV	2	0.12 LBS
3	GWF-03	3/8" GALV FLAT WASHER	2	0.01 LBS
4	GWL-03	3/8" GALV LOCK WASHER	2	0.01 LBS
5	GN-03	3/8" GALV HEX NUT	2	0.02 LBS
6	PGCS-5000	PANEL, POLYMER, 8CP	2	0.47 LBS
7	PGCS-7000	PANEL, POLYMER, 8CP	1	0.30 LBS
8	PGCS-8000	ADAPTER, POLYMER, 4P	1	0.30 LBS

<b>COMMSCOPE, INC. OF NORTH CAROLINA</b>									
TOLERANCES					SAP MATERIAL MASTER				
1 PLACE .X[X] ± 0.2[6.3]		3 PLACE .XXX[X] ± 0.060[1.5]			<b>PGP-CS20-R</b>				
2 PLACE .XX[X] ± 0.12[3.0]		ANGLES ± 2°							
FINISH					MATERIAL				
<b>PG PREMIUM,CBL-SUPPORT,20-HOLE</b>									
SCALE <b>1:3</b>		DOCUMENT NO. <b>PGP-CS20-R</b>							
SIZE <b>C</b>		Auth Group		INSL		MODEL		DRAWING	
VERSION 00		STATUS RE		REVISION A		VERSION 00		STATUS RE	
REVISION A		REVISION A		REVISION A		REVISION A		SHEET 1 OF 1	

DENSITY	2.11	lbs/in <sup>3</sup>
MASS	50.80	lbs
VOLUME	865.59	in <sup>3</sup>
SURFACE AREA	12.3"	in <sup>2</sup>
HEIGHT	20.2"	
LENGTH	2.1"	
WIDTH		