

# CSAAD | IP6A-12BUTP-01S-01S

## Base Product



InstaPATCH® Cu GigaSPEED X10D® U/UTP LSZH Class B2ca  
Preterminated Copper Cable, single row standard density outlet to single  
row standard density outlet, 12 links

## Product Classification

<b>Regional Availability</b>	EMEA
<b>Portfolio</b>	CommScope®
<b>Product Type</b>	Copper trunk cable assembly
<b>Product Brand</b>	GigaSPEED XL®   InstaPATCH® Cu
<b>Ordering Note</b>	Available cable jacket color: white

## General Specifications

<b>ANSI/TIA Category</b>	6A
<b>Cable Type</b>	U/UTP (unshielded)
<b>Conductor Type</b>	Solid
<b>Interface, Connector A</b>	Information outlet
<b>Interface Feature, connector A</b>	Single row   Standard density
<b>Interface, Connector B</b>	Information outlet
<b>Interface Feature, connector B</b>	Single row   Standard density
<b>Link Count</b>	12
<b>Wiring</b>	T568B

## Dimensions

<b>Cable Assembly Length Range (m)</b>	2 – 90
<b>Cable Assembly Length Range (ft)</b>	7 – 295

## Electrical Specifications

<b>dc Resistance, maximum</b>	0.3 ohm
<b>Safety Voltage Rating</b>	300 V

## Ordering Tree

# CSAAD | IP6A-12BUTP-01S-01S

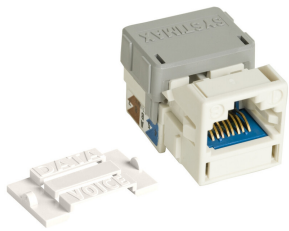
1 2 3 4 5 6 7 8 9 10 11 12																																																																																																			
C A A A C - 1 1 H A B B F 0 5 0																																																																																																			
<b>Cable Type</b>	<b>Connector B</b>	<b>Orientation A</b>	<b>Orientation B</b>																																																																																																
<table border="1"> <tr><td>A</td><td>Cat 6A X10D – U/UTP (Plenum)</td></tr> <tr><td>B</td><td>Cat 6A X10D – U/UTP (Riser)</td></tr> <tr><td>C</td><td>Cat 6A X10D – U/UTP (LSZH)</td></tr> <tr><td>D</td><td>Cat 6A X10D – F/UTP (Plenum)</td></tr> <tr><td>E</td><td>Cat 6A X10D – F/UTP (Riser)</td></tr> <tr><td>F</td><td>Cat 6A X10D – F/UTP (LSZH)</td></tr> <tr><td>G</td><td>Cat 6 XL – U/UTP (Plenum)</td></tr> <tr><td>H</td><td>Cat 6 XL – U/UTP (Riser)</td></tr> <tr><td>J</td><td>Cat 6 XL – U/UTP (LSZH)</td></tr> <tr><td>Q</td><td>Cat 6A X10D – S/FTP (LSZH)</td></tr> <tr><td>R</td><td>Cat 6 – U/UTP Class B Rated (LSZH)</td></tr> <tr><td>S</td><td>Cat 6A – U/UTP Class B Rated (LSZH)</td></tr> <tr><td>Y</td><td>Cat 6A X10D SD – U/UTP (Riser)</td></tr> </table>	A	Cat 6A X10D – U/UTP (Plenum)	B	Cat 6A X10D – U/UTP (Riser)	C	Cat 6A X10D – U/UTP (LSZH)	D	Cat 6A X10D – F/UTP (Plenum)	E	Cat 6A X10D – F/UTP (Riser)	F	Cat 6A X10D – F/UTP (LSZH)	G	Cat 6 XL – U/UTP (Plenum)	H	Cat 6 XL – U/UTP (Riser)	J	Cat 6 XL – U/UTP (LSZH)	Q	Cat 6A X10D – S/FTP (LSZH)	R	Cat 6 – U/UTP Class B Rated (LSZH)	S	Cat 6A – U/UTP Class B Rated (LSZH)	Y	Cat 6A X10D SD – U/UTP (Riser)	<table border="1"> <tr><td>A</td><td>Outlet* – Single Row Standard Density</td></tr> <tr><td>B</td><td>Outlet* – Dual Row Standard Density</td></tr> <tr><td>C</td><td>Outlet* – Dual Row High Density</td></tr> <tr><td>G</td><td>RJ45 Plug* – Single Row Standard Density</td></tr> <tr><td>H</td><td>RJ45 Plug* – Dual Row Standard Density</td></tr> <tr><td>J</td><td>RJ45 Plug* – Dual Row High Density</td></tr> <tr><td>N</td><td>1100 Module</td></tr> <tr><td>R</td><td>360 1100 Evolve Module</td></tr> <tr><td>S</td><td>OneLink 2x6</td></tr> <tr><td>T</td><td>OneLink 2x4</td></tr> </table>	A	Outlet* – Single Row Standard Density	B	Outlet* – Dual Row Standard Density	C	Outlet* – Dual Row High Density	G	RJ45 Plug* – Single Row Standard Density	H	RJ45 Plug* – Dual Row Standard Density	J	RJ45 Plug* – Dual Row High Density	N	1100 Module	R	360 1100 Evolve Module	S	OneLink 2x6	T	OneLink 2x4	<table border="1"> <tr><td>1</td><td>Trident Series Flat</td></tr> <tr><td>2</td><td>Right Paired Flat</td></tr> <tr><td>3</td><td>Right Series Flat</td></tr> <tr><td>4</td><td>Left Paired Flat</td></tr> <tr><td>5</td><td>Left Series Flat</td></tr> <tr><td>6</td><td>Trident Paired Flat</td></tr> <tr><td>A</td><td>Trident Series Angled</td></tr> <tr><td>B</td><td>Right Paired Angled</td></tr> <tr><td>C</td><td>Right Series Angled</td></tr> <tr><td>D</td><td>Left Paired Angled</td></tr> <tr><td>E</td><td>Left Series Angled</td></tr> <tr><td>F</td><td>Trident Paired Angled</td></tr> </table>	1	Trident Series Flat	2	Right Paired Flat	3	Right Series Flat	4	Left Paired Flat	5	Left Series Flat	6	Trident Paired Flat	A	Trident Series Angled	B	Right Paired Angled	C	Right Series Angled	D	Left Paired Angled	E	Left Series Angled	F	Trident Paired Angled	<table border="1"> <tr><td>1</td><td>Trident Series Flat</td></tr> <tr><td>2</td><td>Right Paired Flat</td></tr> <tr><td>3</td><td>Right Series Flat</td></tr> <tr><td>4</td><td>Left Paired Flat</td></tr> <tr><td>5</td><td>Left Series Flat</td></tr> <tr><td>6</td><td>Trident Paired Flat</td></tr> <tr><td>A</td><td>Trident Series Angled</td></tr> <tr><td>B</td><td>Right Paired Angled</td></tr> <tr><td>C</td><td>Right Series Angled</td></tr> <tr><td>D</td><td>Left Paired Angled</td></tr> <tr><td>E</td><td>Left Series Angled</td></tr> <tr><td>F</td><td>Trident Paired Angled</td></tr> <tr><td>X</td><td>Not Applicable</td></tr> </table>	1	Trident Series Flat	2	Right Paired Flat	3	Right Series Flat	4	Left Paired Flat	5	Left Series Flat	6	Trident Paired Flat	A	Trident Series Angled	B	Right Paired Angled	C	Right Series Angled	D	Left Paired Angled	E	Left Series Angled	F	Trident Paired Angled	X	Not Applicable
A	Cat 6A X10D – U/UTP (Plenum)																																																																																																		
B	Cat 6A X10D – U/UTP (Riser)																																																																																																		
C	Cat 6A X10D – U/UTP (LSZH)																																																																																																		
D	Cat 6A X10D – F/UTP (Plenum)																																																																																																		
E	Cat 6A X10D – F/UTP (Riser)																																																																																																		
F	Cat 6A X10D – F/UTP (LSZH)																																																																																																		
G	Cat 6 XL – U/UTP (Plenum)																																																																																																		
H	Cat 6 XL – U/UTP (Riser)																																																																																																		
J	Cat 6 XL – U/UTP (LSZH)																																																																																																		
Q	Cat 6A X10D – S/FTP (LSZH)																																																																																																		
R	Cat 6 – U/UTP Class B Rated (LSZH)																																																																																																		
S	Cat 6A – U/UTP Class B Rated (LSZH)																																																																																																		
Y	Cat 6A X10D SD – U/UTP (Riser)																																																																																																		
A	Outlet* – Single Row Standard Density																																																																																																		
B	Outlet* – Dual Row Standard Density																																																																																																		
C	Outlet* – Dual Row High Density																																																																																																		
G	RJ45 Plug* – Single Row Standard Density																																																																																																		
H	RJ45 Plug* – Dual Row Standard Density																																																																																																		
J	RJ45 Plug* – Dual Row High Density																																																																																																		
N	1100 Module																																																																																																		
R	360 1100 Evolve Module																																																																																																		
S	OneLink 2x6																																																																																																		
T	OneLink 2x4																																																																																																		
1	Trident Series Flat																																																																																																		
2	Right Paired Flat																																																																																																		
3	Right Series Flat																																																																																																		
4	Left Paired Flat																																																																																																		
5	Left Series Flat																																																																																																		
6	Trident Paired Flat																																																																																																		
A	Trident Series Angled																																																																																																		
B	Right Paired Angled																																																																																																		
C	Right Series Angled																																																																																																		
D	Left Paired Angled																																																																																																		
E	Left Series Angled																																																																																																		
F	Trident Paired Angled																																																																																																		
1	Trident Series Flat																																																																																																		
2	Right Paired Flat																																																																																																		
3	Right Series Flat																																																																																																		
4	Left Paired Flat																																																																																																		
5	Left Series Flat																																																																																																		
6	Trident Paired Flat																																																																																																		
A	Trident Series Angled																																																																																																		
B	Right Paired Angled																																																																																																		
C	Right Series Angled																																																																																																		
D	Left Paired Angled																																																																																																		
E	Left Series Angled																																																																																																		
F	Trident Paired Angled																																																																																																		
X	Not Applicable																																																																																																		
<b>Connector A</b>	<b>Link</b>	<b>Outlet Color</b>	<b>UOM</b>																																																																																																
<table border="1"> <tr><td>A</td><td>Outlet* – Single Row Standard Density</td></tr> <tr><td>B</td><td>Outlet* – Dual Row Standard Density</td></tr> <tr><td>C</td><td>Outlet* – Dual Row High Density</td></tr> <tr><td>G</td><td>RJ45 Plug* – Single Row Standard Density</td></tr> <tr><td>H</td><td>RJ45 Plug* – Dual Row Standard Density</td></tr> <tr><td>J</td><td>RJ45 Plug* – Dual Row High Density</td></tr> <tr><td>N</td><td>1100 Module</td></tr> <tr><td>R</td><td>360 1100 Evolve Module</td></tr> <tr><td>S</td><td>OneLink 2x6</td></tr> <tr><td>T</td><td>OneLink 2x4</td></tr> <tr><td>X</td><td>Unterminated</td></tr> </table>	A	Outlet* – Single Row Standard Density	B	Outlet* – Dual Row Standard Density	C	Outlet* – Dual Row High Density	G	RJ45 Plug* – Single Row Standard Density	H	RJ45 Plug* – Dual Row Standard Density	J	RJ45 Plug* – Dual Row High Density	N	1100 Module	R	360 1100 Evolve Module	S	OneLink 2x6	T	OneLink 2x4	X	Unterminated	<table border="1"> <tr><td>B</td><td>6</td></tr> <tr><td>C</td><td>8</td></tr> <tr><td>D</td><td>12</td></tr> <tr><td>E</td><td>16</td></tr> <tr><td>F</td><td>18</td></tr> <tr><td>G</td><td>24</td></tr> </table>	B	6	C	8	D	12	E	16	F	18	G	24	<table border="1"> <tr><td>0</td><td>Not Applicable</td></tr> <tr><td>1</td><td>Black (BK)</td></tr> <tr><td>2</td><td>Blue (BL)</td></tr> <tr><td>B</td><td>White (WH)</td></tr> </table>	0	Not Applicable	1	Black (BK)	2	Blue (BL)	B	White (WH)	<table border="1"> <tr><td>11</td><td>F</td><td>Foot</td></tr> <tr><td></td><td>M</td><td>Meter</td></tr> </table>	11	F	Foot		M	Meter																																																
A	Outlet* – Single Row Standard Density																																																																																																		
B	Outlet* – Dual Row Standard Density																																																																																																		
C	Outlet* – Dual Row High Density																																																																																																		
G	RJ45 Plug* – Single Row Standard Density																																																																																																		
H	RJ45 Plug* – Dual Row Standard Density																																																																																																		
J	RJ45 Plug* – Dual Row High Density																																																																																																		
N	1100 Module																																																																																																		
R	360 1100 Evolve Module																																																																																																		
S	OneLink 2x6																																																																																																		
T	OneLink 2x4																																																																																																		
X	Unterminated																																																																																																		
B	6																																																																																																		
C	8																																																																																																		
D	12																																																																																																		
E	16																																																																																																		
F	18																																																																																																		
G	24																																																																																																		
0	Not Applicable																																																																																																		
1	Black (BK)																																																																																																		
2	Blue (BL)																																																																																																		
B	White (WH)																																																																																																		
11	F	Foot																																																																																																	
	M	Meter																																																																																																	
<b>Bundling</b>	<b>Jacket Color</b>	<b>Length</b>																																																																																																	
<table border="1"> <tr><td>7</td><td>H</td><td>Hook-n-loop</td></tr> <tr><td></td><td>S</td><td>Sleaving</td></tr> </table>	7	H	Hook-n-loop		S	Sleaving	<table border="1"> <tr><td>10</td><td>B</td><td>White (WH)</td></tr> <tr><td></td><td>C</td><td>Slate (SL)</td></tr> <tr><td></td><td>Z</td><td>Blue (BL)</td></tr> </table>	10	B	White (WH)		C	Slate (SL)		Z	Blue (BL)	<table border="1"> <tr><td>12</td><td>XXX</td></tr> </table>	12	XXX	<ul style="list-style-type: none"> <li>Cords &gt; 1m are authorized for use in channels and are an effective standalone method used to connect active devices</li> <li>Cords &lt; 1m are also valid elements for use in a channel or as an equipment interconnect, but due to their limited length are not guaranteed to meet component compliance requirements that were developed to assess the quality of longer cords</li> </ul>																																																																															
7	H	Hook-n-loop																																																																																																	
	S	Sleaving																																																																																																	
10	B	White (WH)																																																																																																	
	C	Slate (SL)																																																																																																	
	Z	Blue (BL)																																																																																																	
12	XXX																																																																																																		
<b>Labeling</b>																																																																																																			
<table border="1"> <tr><td>8</td><td>A</td><td>Generic Label</td></tr> </table>	8	A	Generic Label																																																																																																
8	A	Generic Label																																																																																																	

## Environmental Specifications

<b>Operating Temperature</b>	-20 °C to +60 °C (-4 °F to +140 °F)
<b>EN50575 CPR Cable EuroClass Fire Performance</b>	B2ca
<b>EN50575 CPR Cable EuroClass Smoke Rating</b>	s1a
<b>EN50575 CPR Cable EuroClass Droplets Rating</b>	d0
<b>EN50575 CPR Cable EuroClass Acidity Rating</b>	a1
<b>Environmental Space</b>	Low Smoke Zero Halogen (LSZH)
<b>Flammability Rating</b>	UL 94 V-0

## Included Products

760092429 MGS600-WH	–	GigaSPEED X10D® M-Series Modular Jack, RJ45, Cat6A Unshielded, White
760237884 3091B-B WHT 4/23 R1000	–	GigaSPEED X10D® 3091B-B ETL Verified Category 6A U/UTP Cable, white jacket, 4 pair count, 1000 ft (305 m) length, reel



## GigaSPEED X10D® M-Series Modular Jack, RJ45, Cat6A Unshielded, White

- Electrical performance guaranteed to meet or exceed the channel specifications to ISO/IEC 11801 Class EA and ANSI/TIA-568-C.2 Category 6A
- Patented crossing of straddling pair contacts enables efficient alien crosstalk reduction in the channel
- Snaps into standard M-series faceplates, surface-mount boxes, consolidation point boxes and modular panels
- Mountable either at 90 degrees (straight) or 45 degrees (angled) in M-series faceplate
- Universal design and label supports both T568 A & B wiring
- IDC connector terminations on rear of base allow quick and easy installation of 22 to 24 AWG cable
- Support network line speeds up to at least 10 gigabits per second
- Low-profile rear protective strain relief cap, protects against contamination and secures the connection

## Product Classification

### Regional Availability

Asia | Australia/New Zealand | EMEA | Latin America | North America

### Portfolio

SYSTIMAX®

### Product Type

Modular jack

### Product Brand

GigaSPEED X10D®

### Product Series

MGS600

## General Specifications

### ANSI/TIA Category

6A

### Application

21 AWG for CommScope GigaREACH cable only

### Cable Type

Unshielded

### Color

White

### Conductor Type

Solid | Stranded

### Integrated Dust Cover Type

None

### Mounting Note

Color matches with M-series White Faceplates and Surface Mount Boxes

### Termination Type

IDC

### Wiring

T568A | T568B

## Dimensions

# 760092429 | MGS600-WH

---

<b>Height</b>	19.4 mm   0.764 in
<b>Width</b>	21.08 mm   0.83 in
<b>Depth</b>	30.2 mm   1.189 in
<b>Compatible Conductor Gauge, solid</b>	22 AWG   24 AWG
<b>Compatible Conductor Gauge, stranded</b>	22 AWG   24 AWG

## Electrical Specifications

<b>Contact Resistance Variation, maximum</b>	20 mOhm
<b>Contact Resistance, maximum</b>	100 mOhm
<b>Current Rating at Temperature</b>	1.5 A @ 20 °C   1.5 A @ 68 °F
<b>Dielectric Withstand Voltage, RMS, conductive surface</b>	1,500 Vac @ 60 Hz
<b>Dielectric Withstand Voltage, RMS, contact-to-contact</b>	1,000 Vac @ 60 Hz
<b>Insulation Resistance, minimum</b>	500 MOhm
<b>Remote Powering</b>	Fully supports the safe delivery of power over LAN cabling described by IEEE 802.3bt (Type 4) and complies with the unmating under electrical load requirements prescribed by IEC 60512-99-002
<b>PoE Durability</b>	Supports IEEE 802.3bt Type 4 (90 W) applications after 3000 plug to jack mating cycles

## Material Specifications

<b>Contact Plating Material</b>	Precious metals
<b>Material Type</b>	Copper alloy   High-impact, flame retardant, thermoplastic
<b>Termination Contact Plating</b>	Nickel

## Mechanical Specifications

<b>Plug Retention Force, minimum</b>	133 N   29.9 lbf
<b>Plug to Jack Mating Cycles</b>	Complies to IEC 60603-7 series

## Environmental Specifications

<b>Operating Temperature</b>	-10 °C to +60 °C (+14 °F to +140 °F)
<b>Storage Temperature</b>	-40 °C to +70 °C (-40 °F to +158 °F)
<b>Relative Humidity</b>	Up to 95%, non-condensing
<b>Flammability Rating</b>	UL 94 V-0
<b>Safety Standard</b>	UL   cUL

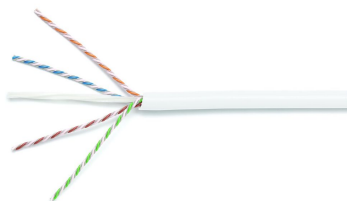
## Packaging and Weights

<b>Packaging Material</b>	Standard
<b>Packaging quantity</b>	1

## Regulatory Compliance/Certifications

<b>Agency</b>	<b>Classification</b>
CHINA-ROHS	Below maximum concentration value
ISO 9001:2015	Designed, manufactured and/or distributed under this quality management system
REACH-SVHC	Compliant as per SVHC revision on <a href="http://www.commscope.com/ProductCompliance">www.commscope.com/ProductCompliance</a>
ROHS	Compliant
UK-ROHS	Compliant





GigaSPEED X10D® 3091B-B ETL Verified Category 6A U/UTP Cable, white jacket, 4 pair count, 1000 ft (305 m) length, reel

## Product Classification

<b>Regional Availability</b>	EMEA
<b>Portfolio</b>	SYSTIMAX®
<b>Product Type</b>	Twisted pair cable
<b>Product Brand</b>	GigaSPEED X10D®

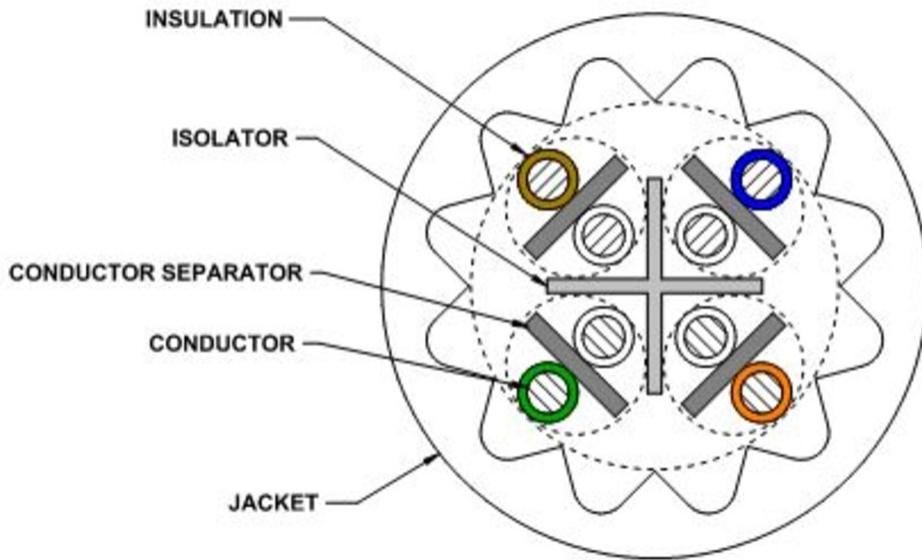
## General Specifications

<b>Product Number</b>	3091B-B
<b>ANSI/TIA Category</b>	6A
<b>Cable Component Type</b>	Horizontal
<b>Cable Type</b>	U/UTP (unshielded)
<b>Conductor Type, singles</b>	Solid
<b>Conductors, quantity</b>	8
<b>Jacket Color</b>	White
<b>Pairs, quantity</b>	4
<b>Separator Type</b>	Isolator
<b>Transmission Standards</b>	ANSI/TIA-568.2-D   ISO/IEC 11801 Class EA

## Dimensions

<b>Cable Length</b>	304.8 m   1000 ft
<b>Diameter Over Insulated Conductor</b>	0.864 mm   0.034 in
<b>Diameter Over Jacket, nominal</b>	7.239 mm   0.285 in
<b>Jacket Thickness</b>	1.295 mm   0.051 in
<b>Conductor Gauge, singles</b>	23 AWG

Cross Section Drawing



Electrical Specifications

<b>dc Resistance Unbalance, maximum</b>	4 %
<b>dc Resistance, maximum</b>	7.61 ohms/100 m   2.32 ohms/100 ft
<b>Dielectric Strength, minimum</b>	2500 Vdc
<b>Mutual Capacitance at Frequency</b>	6.0 nF/100 m @ 1 kHz
<b>Nominal Velocity of Propagation (NVP)</b>	67 %
<b>Operating Frequency, maximum</b>	550 MHz
<b>Operating Voltage, maximum</b>	80 V
<b>Remote Powering</b>	Fully complies with the recommendations set forth by IEEE 802.3bt (Type 4) for the safe delivery of power over LAN cable when installed according to ISO/IEC 14763-2, CENELEC EN 50174-1, CENELEC EN 50174-2 or TIA TSB-184-A
<b>Segregation Class</b>	c

Material Specifications

<b>Conductor Material</b>	Bare copper
<b>Insulation Material</b>	Polyolefin
<b>Jacket Material</b>	Low Smoke Zero Halogen (LSZH)
<b>Separator Material</b>	Polyolefin

# 760237884 | 3091B-B WHT 4/23 R1000

**Separator 2 Material** Polyolefin

## Mechanical Specifications

**Pulling Tension, maximum** 11.34 kg | 25 lb

## Environmental Specifications

**Installation temperature** 0 °C to +60 °C (+32 °F to +140 °F)

**Operating Temperature** -20 °C to +60 °C (-4 °F to +140 °F)

**Acid Gas Test Method** EN 50267-2-3

**EN50575 CPR Cable EuroClass Fire Performance** B2ca

**EN50575 CPR Cable EuroClass Smoke Rating** s1a

**EN50575 CPR Cable EuroClass Droplets Rating** d0

**EN50575 CPR Cable EuroClass Acidity Rating** a1

**Environmental Space** Low Smoke Zero Halogen (LSZH)

**Smoke Test Method** IEC 61034-2

## Packaging and Weights

**Cable weight** 55.955 kg/km | 37.6 lb/kft

**Packaging Type** Reel

## Regulatory Compliance/Certifications

Agency	Classification
CENELEC	EN 50575 compliant, Declaration of Performance (DoP) available
CHINA-ROHS	Below maximum concentration value
ISO 9001:2015	Designed, manufactured and/or distributed under this quality management system
REACH-SVHC	Compliant as per SVHC revision on <a href="http://www.commscope.com/ProductCompliance">www.commscope.com/ProductCompliance</a>
ROHS	Compliant
UK-ROHS	Compliant

