

CPP Modular Shielded NETCONNECT® panel

General

This CommScope® Patch Panel (CPP) shielded modular panels is available in a 24-port, straight.

The panel consists of a rack mounted base unit with an integrated rear cable management. The panel comes with fixed port numbering 1 to 24. The panel mounts in a 19-inch (483mm) equipment rack with universal hole spacing.

The panel can be used in an Unshielded and Shielded NETCONNECT® installations and together with the **SL** and the **SLX** jacks.

Ordering information is listed below:

Material ID	Part No.	Description
760256625	CPP-SMOD-SL-1U-E-24	Shielded Modular Panel, SL, 1U, 24 port, Black



Parts List

Parts Included

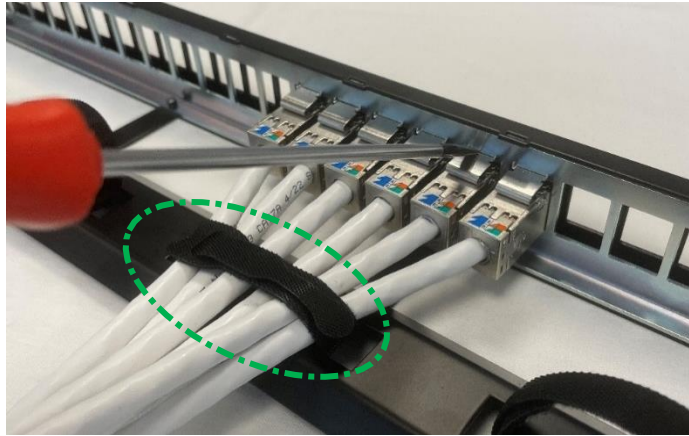
- 1 x Panel with integrated rear cable management
- 4 x Hook-and-loop straps
- 2 x M5 grounding points

Tools Required

- Phillips head screwdriver
- Flat blade screwdriver, max 2.9mm dia.

Installation of Panel

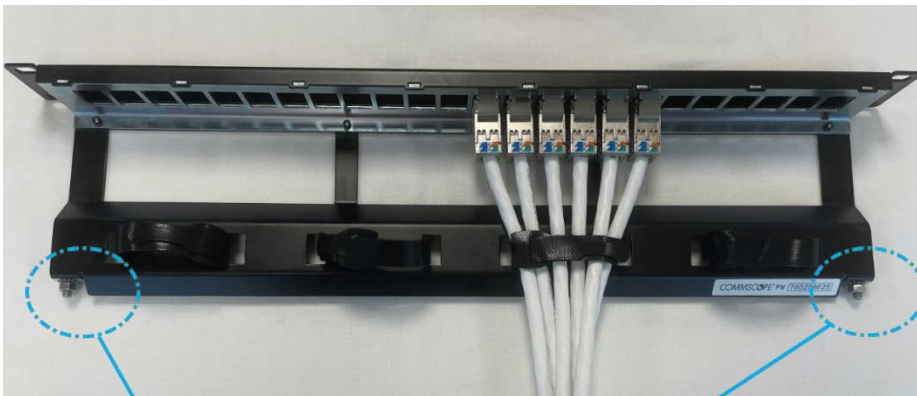
Step 1 – Populate Panel with Jacks



1. Connect cables to jacks per instructions provided with the individual jacks.
2. Populate panel with jacks and route cabling as shown.

Note: Secure cables using the hook-and-loop straps provided with the panel.

Step 2 – Grounding shielded panels.



Panel Ground point (5 mm)

Only use one of two grounding points connections provided on rear of panel.

Follow local standard for grounding wire dimension.

