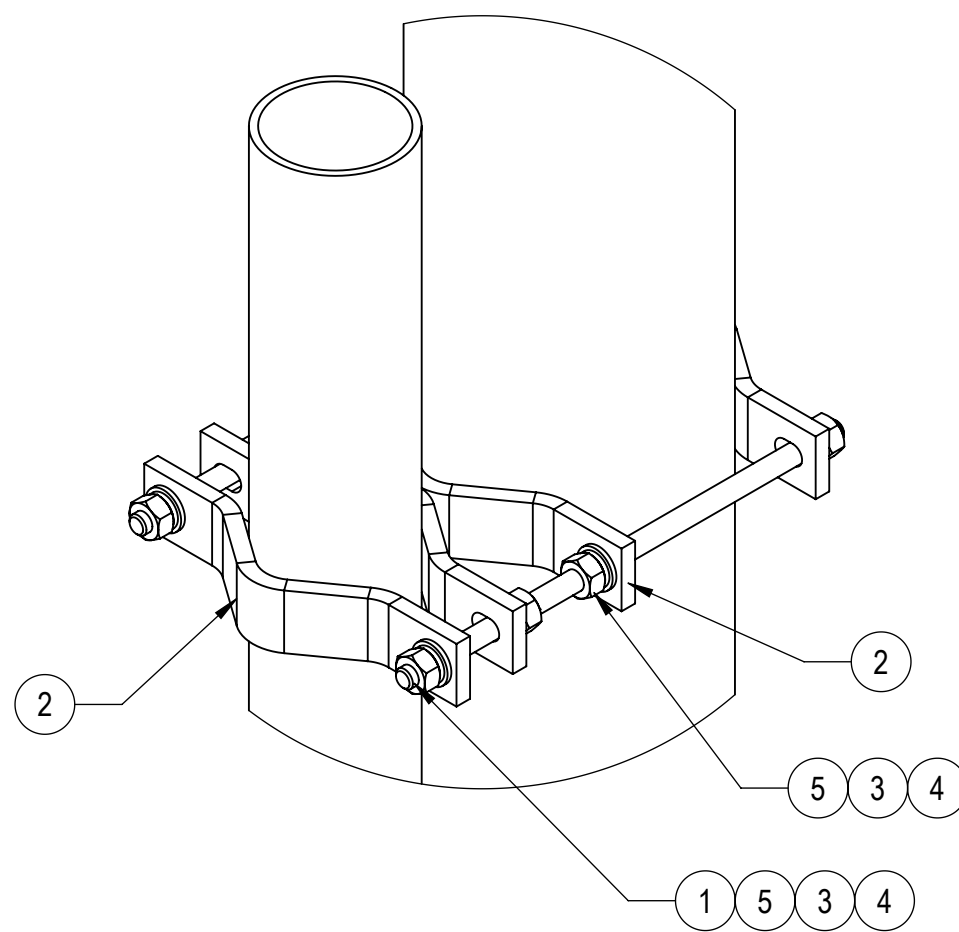
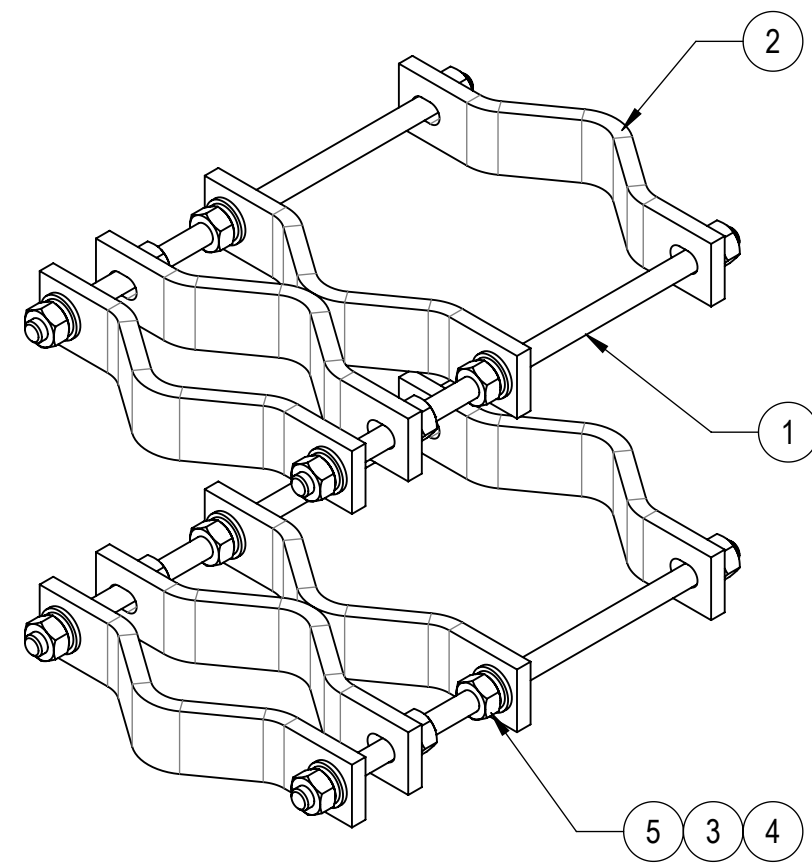
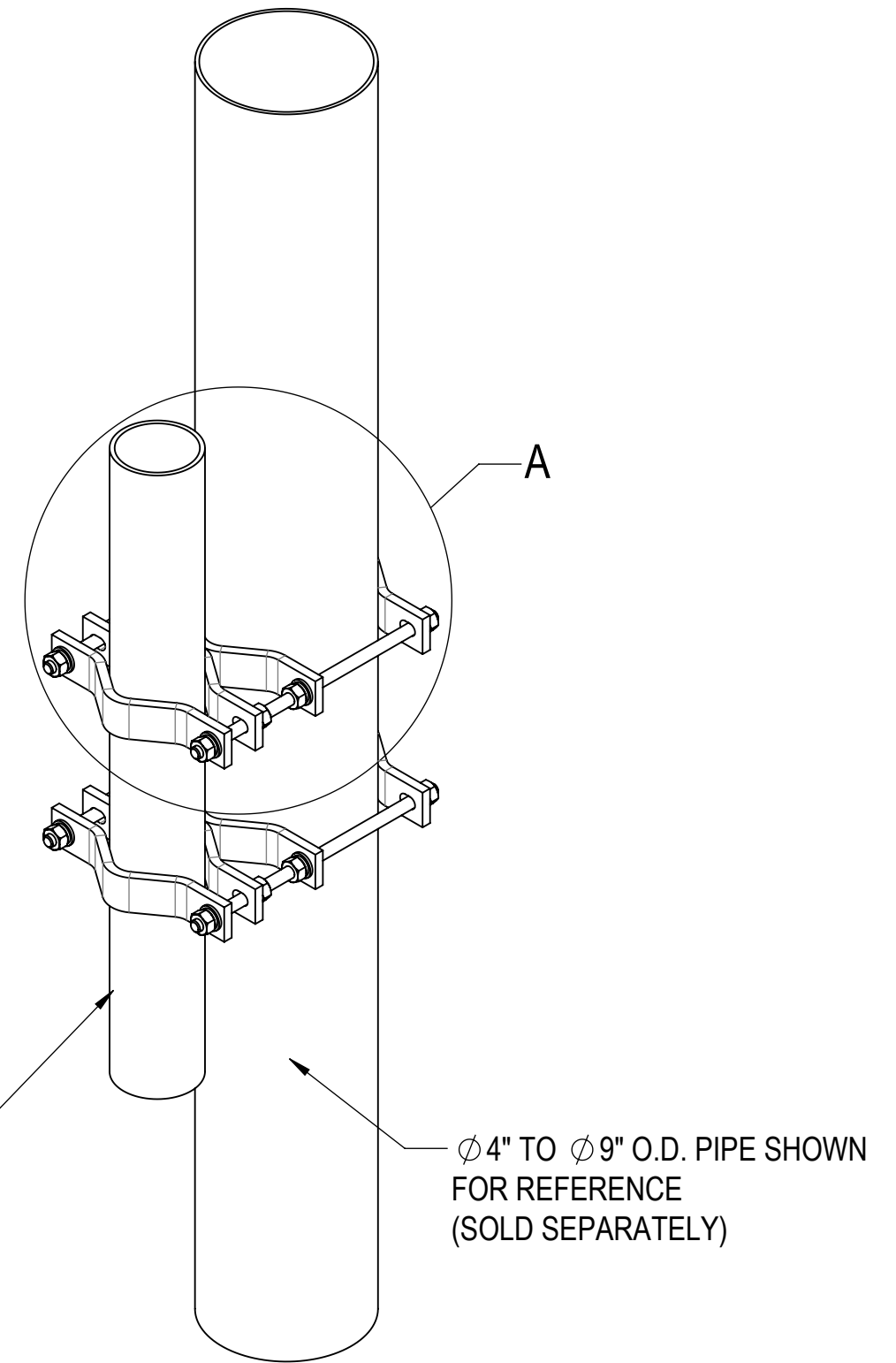
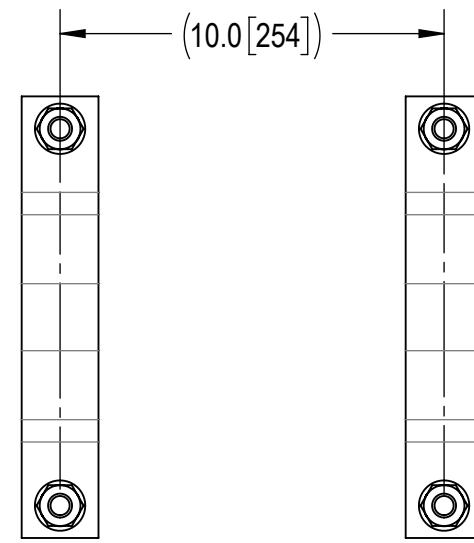
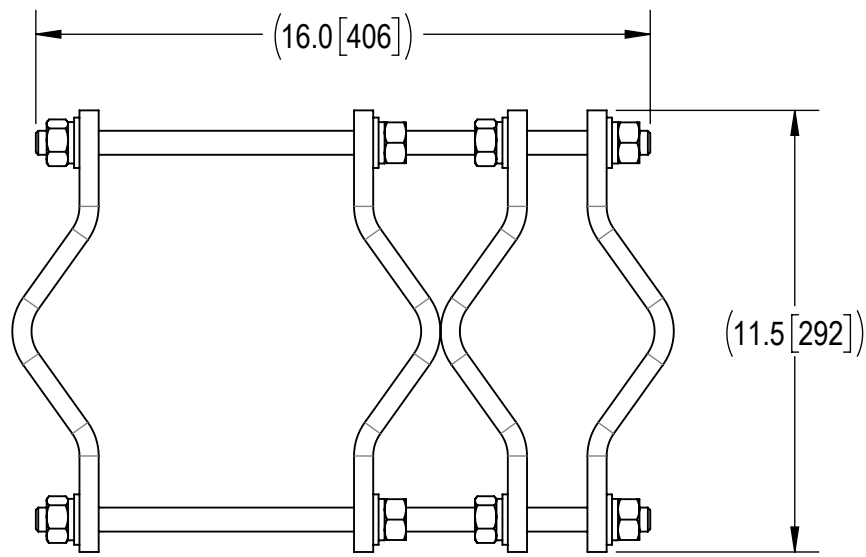


- 1.0 GENERAL NOTES
 1.1 ALL METRIC DIMENSIONS ARE IN BRACKETS [X. X]
 1.2 FOR PATENT INFO: <https://www.cs-pat.com>
- 2.0 DESIGN NOTES
 2.1 ANY HAZARDS OR OBSTRUCTIONS TO THE CLIMBING FACILITY AND SAFETY CLIMB MUST BE IDENTIFIED PRIOR TO INSTALLING THE APPURTENANCE. ADDITIONAL PRODUCTS MAY BE REQUIRED TO MAINTAIN THE INTEGRITY OF THE SAFETY CLIMB. DURING INSTALLATION, TEMPORARY AND/OR PERMANENT PRECAUTIONARY MEASURES SHOULD BE TAKEN TO PRESERVE THE CLIMBING FACILITY AND/OR SAFETY CLIMB.
- 3.0 MANUFACTURING/SPECIAL REQUIREMENTS
 3.1 TIGHTEN ALL BOLTS SECURING FLAT PLATES BY THE TURN-OF-NUT METHOD. TIGHTEN ALL U-BOLTS USING TURN-OF-NUT METHOD WITH ATTENTION TO LEAVE EQUAL DISTANCE AND EQUAL FORCE ON EACH LEG OF THE U-BOLT.
- 4.0 TEST
- 5.0 PACKAGING
 5.1 PACKAGING SHALL MEET COMMSCOPE REQUIREMENTS PER DOCUMENT IS-PL-3005
 5.2 PRINTED DOCUMENT TO BE PLACED INSIDE POLYBAG AND THEN IN SHIPPING CONTAINER
 5.3 EXTRA HARDWARE MAY BE SUPPLIED, BAGGED AND SHIPPED

REVISIONS			
REV.	DESCRIPTION	DATE	APPROVED
A	INITIAL RELEASE	MLO 05AUG99	TP
B	REDRAWN & REVISED	DMW 25APR01	TP
C	ADD PLAN VIEWS	MSM 08AUG14	TP
D	UPDATED DRAWING FORMAT	LL1090 18JUL24	BA1025 40200499CMO



DETAIL A
SCALE 1 : 5

COMPONENT PART NUMBERS PROVIDED FOR ASSEMBLY PURPOSES;
 INDIVIDUAL COMPONENTS MAY BE SHIPPED AS PARTS WITHIN AN INCLUDED KIT.

ITEM NO.	PART NUMBER	DESCRIPTION	QTY.	WEIGHT	NOTE NO.
1	MT-382-16	5/8" X 16" GALV THREADED ROD	4	1.38 LBS	
2	MCP10	2-1/2" O.D. TO 9" O.D. CLAMP HALF	8	3.36 LBS	
3	GWL-05	5/8" GALV LOCK WASHER	16	0.03 LBS	
4	GWF05A	GALV FLAT WASHER HARDENED 5/8", 1.30D	16	0.04 LBS	
5	GN-05A	5/8" GALV HEX NUT (A194 2H)	16	0.12 LBS	

DENSITY	35.34	lbs/in ³
MASS	125.35	lbs
VOLUME	794.92	in ³
SURFACE AREA		in ²
HEIGHT	12.0"	
LENGTH	16.0"	
WIDTH	11.5"	

© 2024 CommScope, Inc. Confidential

COMMSCOPE, INC. OF NORTH CAROLINA									
TOLERANCES					SAP MATERIAL MASTER				
1 PLACE .X[X] ± 0.06[1.5]			3 PLACE .XXX[X] ± 0.010[0.3]		BC-40-16				
2 PLACE .XX[X] ± 0.03[0.8]			ANGLES ± 2°						
FINISH					MATERIAL				
PIPE TO PIPE CLAMP									
UNLESS OTHERWISE SPECIFIED DIMENSIONS ARE IN INCHES INTERPRET PER ANSI Y 14.5M-1994	CE	MLO	DATE	TITLE					
	RW	LL1090	07/22/2024	BC-40-16					
	AD	YMENG	07/22/2024						
	RE	YMENG	07/22/2024						
	ECN 40200499CMO				SCALE	DOCUMENT NO.			
				1:4	BC-40-16				
SIZE	Auth Group	INSL	MODEL			DRAWING			
C			VERSION	STATUS	REVISION	VERSION	STATUS	REVISION	SHEET
			01	RE	D	01	RE	D	1 OF 1