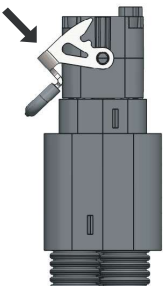
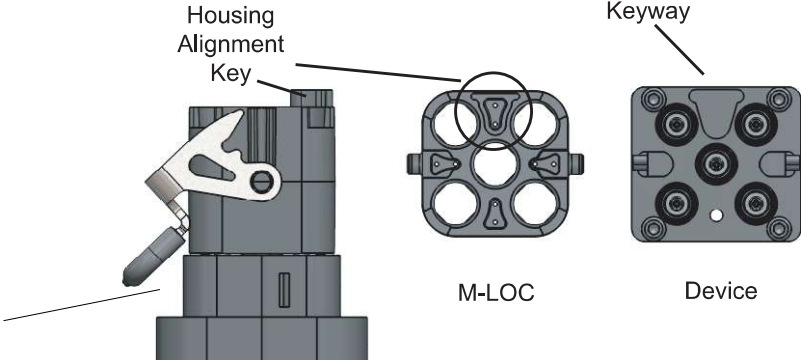


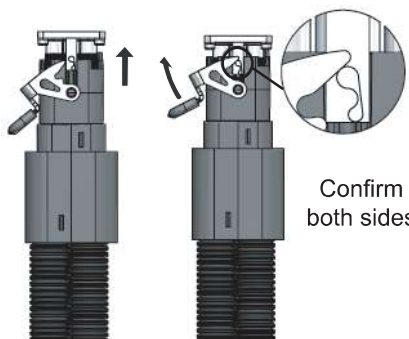
1 Remove any packaging and dust caps from the M-LOC and the device, uncoil the M-LOC assembly. Hold the bent flange portion of latch back toward cable strain relief.



2 Align the key on the housing with the keyway opening in the device. Orient the holes in the M-LOC connector to the panel mount connectors.

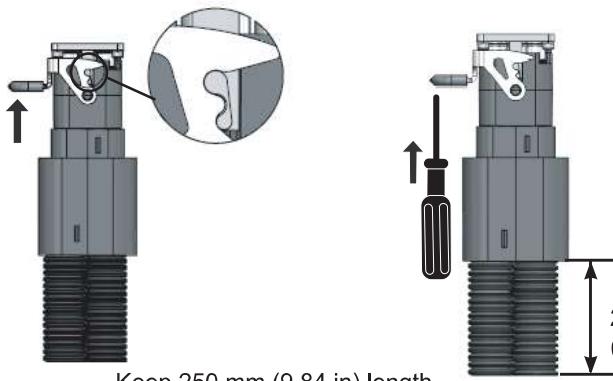


3 Align the M-LOC connector with the antenna mating interface and push firmly into place, eliminating gap between connector housing and bulkhead. While mating, a slight back and forth motion on the housing/ cables will assist in centering and seating the port connectors into alignment. **Do Not** twist the jumpers. Push the latch toward the base of the antenna to engage the latch pins at the base of the connector housing.




Confirm latch pins on both sides are engaged

4 Apply force on the bent flange of the latch until the detents in the arms pop over the pins. There will be an audible and tactile click. To reduce hand strain, a screwdriver may be used.



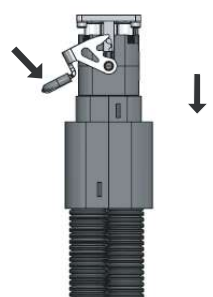
Keep 250 mm (9.84 in) length straight before routing to the device. First hanger should be located within 0.5 meter (19.6 inches).

5 To remove the M-LOC connector pull latch flange away from the base of the antenna. To reduce hand strain, a flat blade screwdriver may be inserted in the slot above the latch flange and pulled down against the flange.



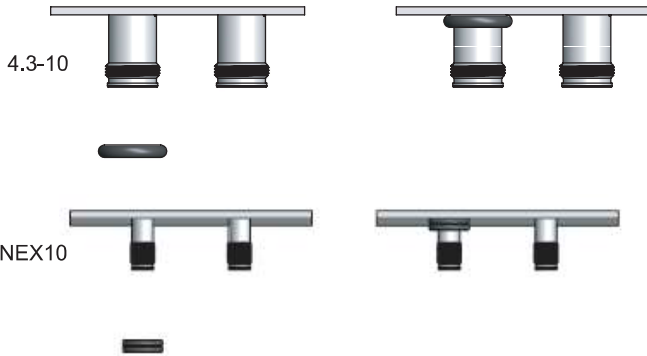
Slot

6 Grasp M-LOC connector housing, hold bent flange portion of latch back toward cable strain relief, pull the connector away from device. A slight back and forth motion on the housing helps to release the port connectors.



M-LOC Bird proof Jumper Assembly for HELIAX® M-LOC series

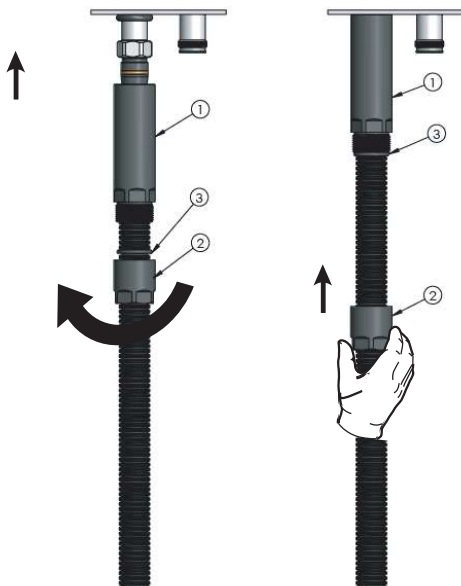
7 Put the gasket onto the female end, then pushing the gasket through the thread until stop by the end cap.



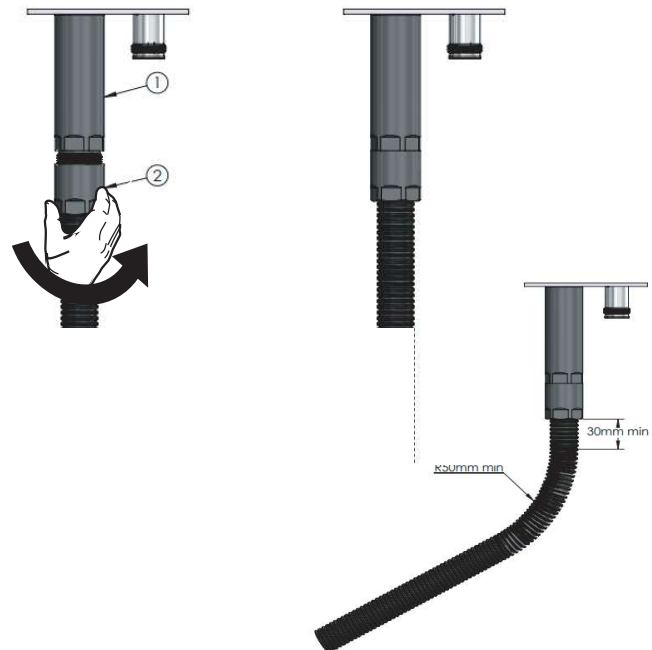
8 Torque the connection using the appropriate wrenches or tool.
4.3-10 male connector: 5-8 N•m (4-6 ft-lb)
NEX10 male connector: 1.5 N•m (1.1 ft-lb)



9 Screw the rear nut **2** separate from the sleeve **1**, then push the sleeve **1** to cover the gasket in, keep the sleeve **1** as line as gasket and stop by the face of the end cap, then push the O-ring **3** until it stop by the end of the sleeve **1**



10 Push the rear nut **2** near to the sleeve **1**, use hand to hold the sleeve **1** and screw the rear nut **2** onto the sleeve **1**, screw tightly by hand (wrench) and adjust the assembly to keep the sleeve cover the whole gasket, do not hold the connector and bend the cable directly behind it, start bend 30mm min away from the cap end as picture shown.



CommScope

3642 E US Highway 70, Claremont, NC 28610 USA
(828) 324-2200 (800) 982-1708
www.commscope.com

Technical Support

+1 888 297 6433, Option 3 (Toll Free US and Canada)
+1 49-9099-69-333
<https://www.commscope.com/wisupport> (open a ticket)

Notice: CommScope disclaims any liability or responsibility for the results of improper or unsafe installation, inspection, maintenance, or removal practices.
Aviso: CommScope no acepta ninguna obligación ni responsabilidad como resultado de prácticas incorrectas o peligrosas de instalación, inspección, mantenimiento o retiro.
Avis: CommScope décline toute responsabilité pour les conséquences de procédures d'installation, d'inspection, d'entretien ou de retrait incorrectes ou dangereuses.
Hinweis: CommScope lehnt jede Haftung oder Verantwortung für Schäden ab, die aufgrund unsachgemäßer Installation, Überprüfung, Wartung oder Demontage auftreten.
Atenção: A CommScope abdica do direito de toda responsabilidade pelos resultados de práticas inadequadas e sem segurança de instalação, inspeção, manutenção ou remoção.
Avvertenza: CommScope declina eventuali responsabilità derivanti dall'esecuzione di procedure di installazione, ispezione, manutenzione e smontaggio improprie o poco sicure.
注意: CommScope 公司申明對於不恰當或不安全的安裝、檢驗、維修或拆卸操作所導致的後果不負責任 何義務和責任