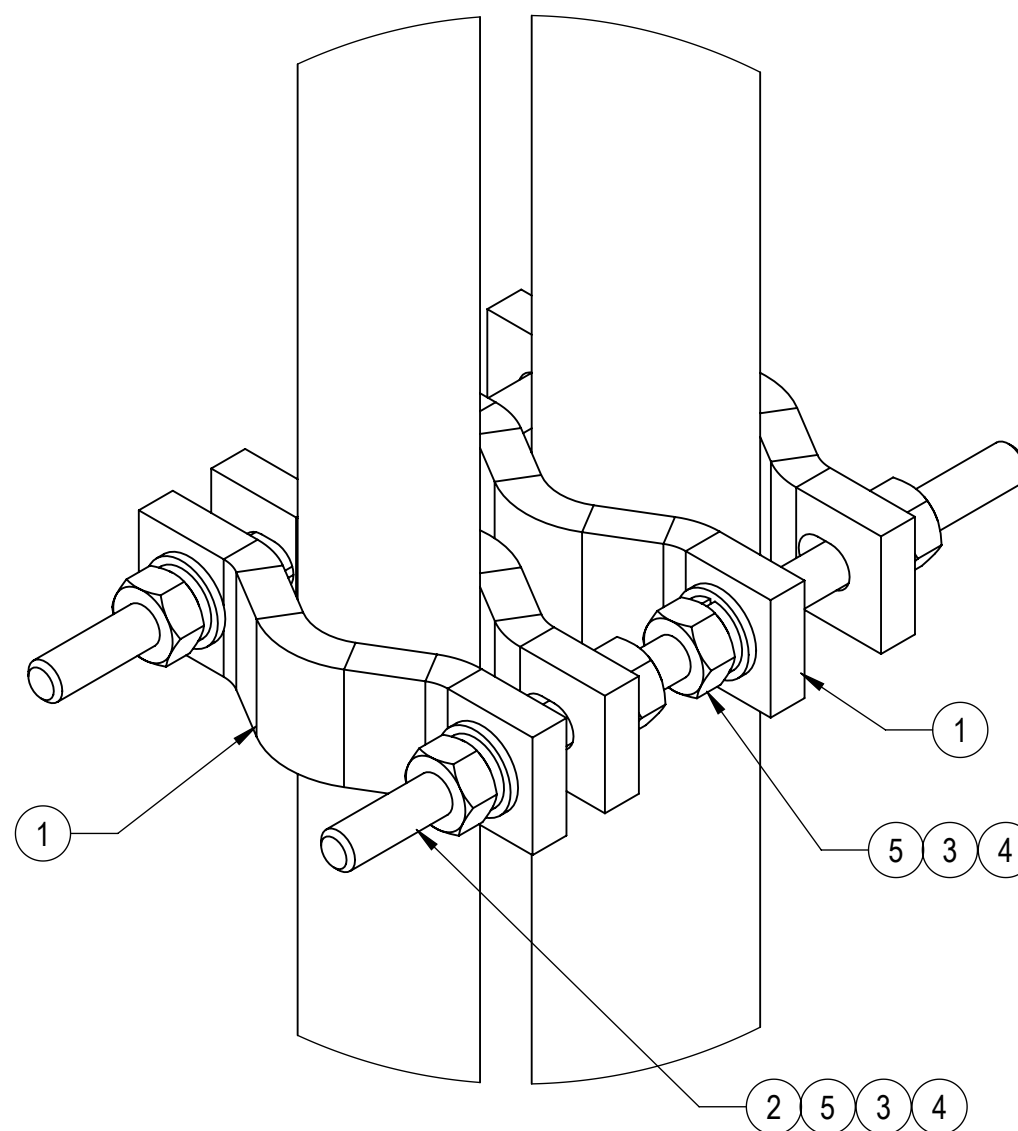
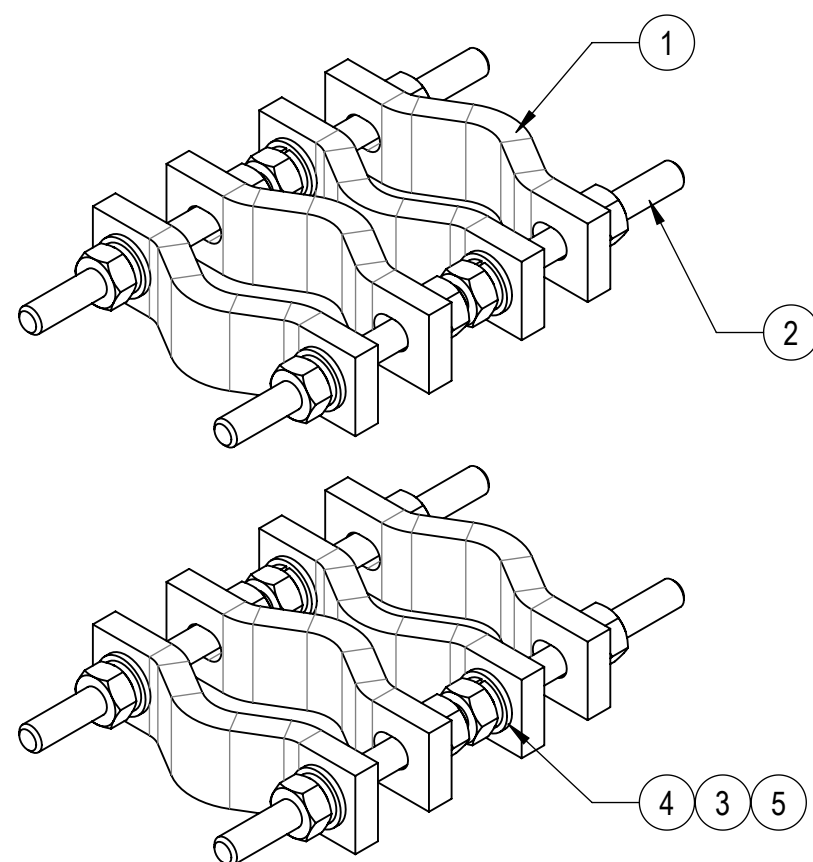
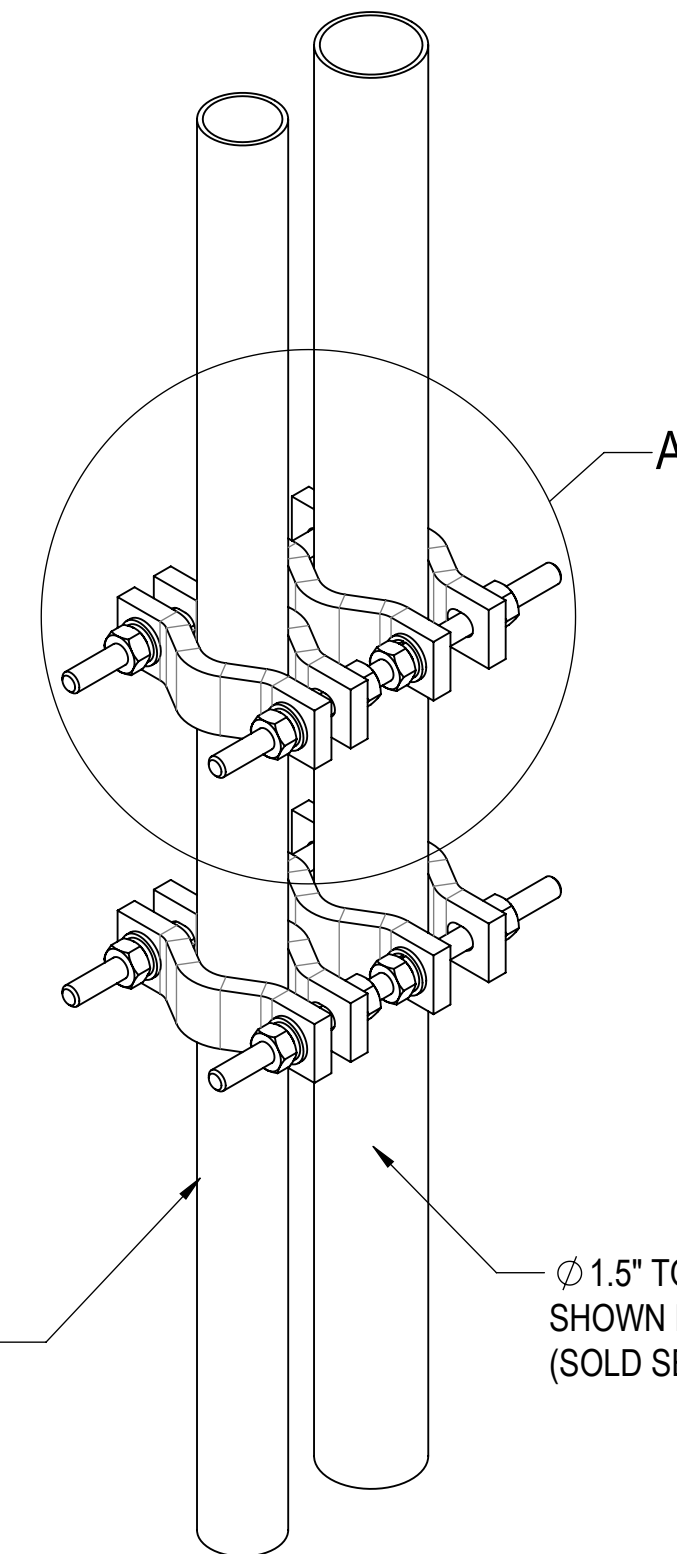
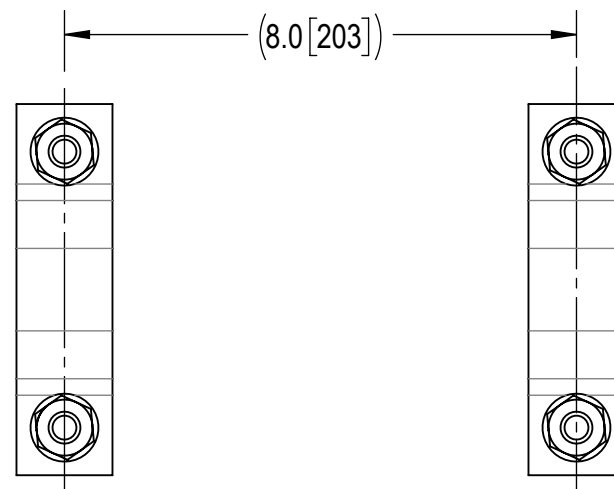
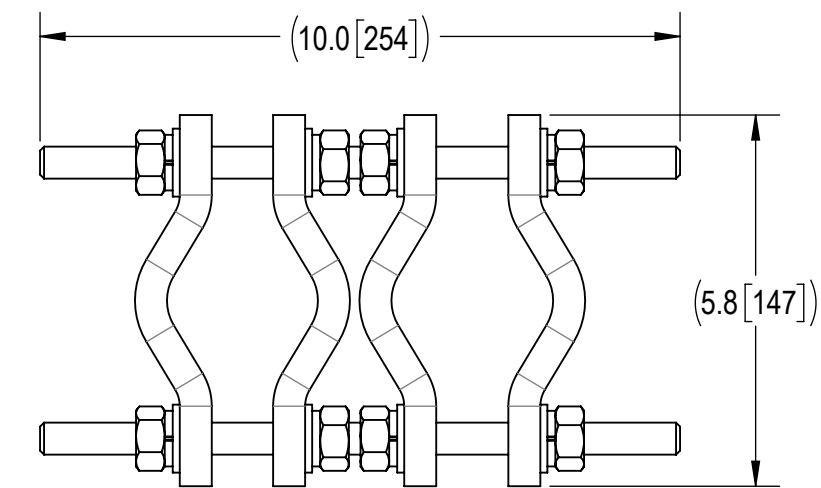


- 1.0 GENERAL NOTES
 1.1 ALL METRIC DIMENSIONS ARE IN BRACKETS [X. X]
 1.2 FOR PATENT INFO: <https://www.cs-pat.com>
 2.0 DESIGN NOTES
 2.1 ANY HAZARDS OR OBSTRUCTIONS TO THE CLIMBING FACILITY AND SAFETY CLIMB MUST BE IDENTIFIED PRIOR TO INSTALLING THE APPURTENANCE. ADDITIONAL PRODUCTS MAY BE REQUIRED TO MAINTAIN THE INTEGRITY OF THE SAFETY CLIMB. DURING INSTALLATION, TEMPORARY AND/OR PERMANENT PRECAUTIONARY MEASURES SHOULD BE TAKEN TO PRESERVE THE CLIMBING FACILITY AND/OR SAFETY CLIMB.
 3.0 MANUFACTURING/SPECIAL REQUIREMENTS
 3.1 TIGHTEN ALL BOLTS SECURING FLAT PLATES BY THE TURN-OF-NUT METHOD. TIGHTEN ALL U-BOLTS USING TURN-OF-NUT METHOD WITH ATTENTION TO LEAVE EQUAL DISTANCE AND EQUAL FORCE ON EACH LEG OF THE U-BOLT.
 4.0 TEST
 5.0 PACKAGING
 5.1 PACKAGING SHALL MEET COMMSCOPE REQUIREMENTS PER DOCUMENT IS-PL-3005
 5.2 PRINTED DOCUMENT TO BE PLACED INSIDE POLYBAG AND THEN IN SHIPPING CONTAINER
 5.3 EXTRA HARDWARE MAY BE SUPPLIED, BAGGED AND SHIPPED

REVISIONS			
REV.	DESCRIPTION	DATE	APPROVED
A	INITIAL RELEASE	MLO 05AUG99	TP
B	REDRAWN & REVISED	DMW 25APR01	TP
C	UPDATED THE WEIGHT CALLOUT IN TITLE BOX	RJC 28JUL15	TP
D	UPDATED DRAWING FORMAT	LL1090 18JUL24	BA1025 40200499CMO



Ø 1.5" TO Ø 3.5" O.D. PIPE SHOWN FOR REFERENCE (SOLD SEPARATELY)

Ø 1.5" TO Ø 3.5" O.D. PIPE SHOWN FOR REFERENCE (SOLD SEPARATELY)

DETAIL A
SCALE 1 : 2

COMPONENT PART NUMBERS PROVIDED FOR ASSEMBLY PURPOSES; INDIVIDUAL COMPONENTS MAY BE SHIPPED AS PARTS WITHIN AN INCLUDED KIT.

ITEM NO.	PART NUMBER	DESCRIPTION	QTY.	WEIGHT	NOTE NO.
1	SCP10	CLAMP HALF: 1/2", 9/16" HOLE, 4-1/8" (EA)	8	1.20 LBS	
2	MT37910	1/2" X 10" GALV THREADED ROD	4	0.55 LBS	
3	GWL-04	1/2" GALV LOCK WASHER	16	0.01 LBS	
4	GWFO4A	1/2" GALV FLAT WASHER (A325)	16	0.02 LBS	
5	GN-04A	1/2" GALV HEX NUT (A194 2H)	16	0.07 LBS	

DENSITY	13.37	lbs/in ³
MASS	47.42	lbs
VOLUME	374.88	in ³
SURFACE AREA	9.5"	in ²
HEIGHT	10.0"	
LENGTH	5.8"	
WIDTH		

© 2024 CommScope, Inc. Confidential

COMMSCOPE, INC. OF NORTH CAROLINA									
TOLERANCES					SAP MATERIAL MASTER				
1 PLACE .X[X] ± 0.06[1.5]			3 PLACE .XXX[X] ± 0.010[0.3]		BC-30-10				
2 PLACE .XX[X] ± 0.03[0.8]			ANGLES ± 2°						
FINISH					MATERIAL				
PIPE TO PIPE CLAMP, HEAVY DUTY									
SCALE 1:4 DOCUMENT NO. BC-30-10									
ECN 40200499CMO									
SIZE		Auth Group		INSL		MODEL		DRAWING	
C		⊕		◁		VERSION		STATUS	
01		RE		D		01		RE	
								SHEET 1 OF 1	