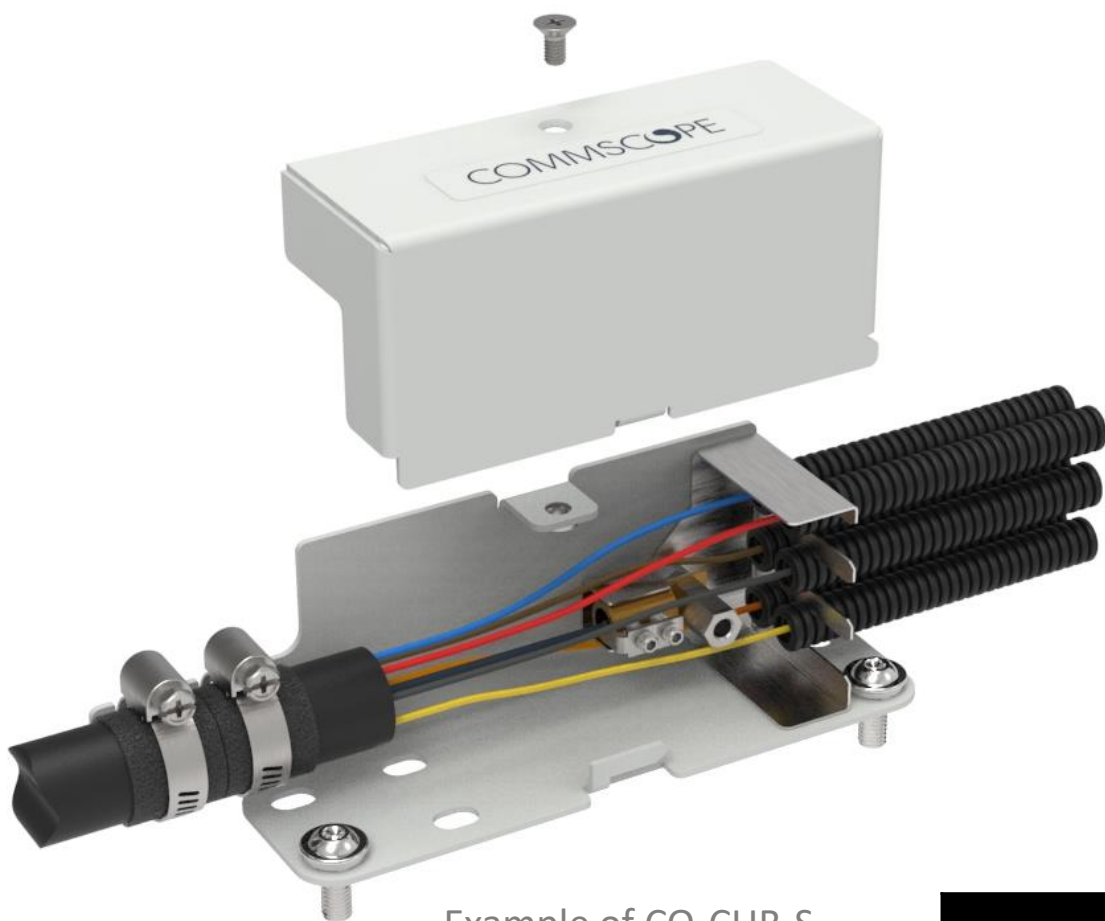


CO-CUB-S, -M

Cable Unit Breakout Small, Medium Installation Instruction

COMMSCOPE®



Example of CO-CUB-S

CO-CUB Type	Cable diameters	Nr. of Flex tubes	Inner diameters Flex tubes
CO-CUB-S	Up to 24mm	max.6	ID 6
CO-CUB-M	Up to 24mm	max.6	ID 12

! CABLES ALWAYS NEED TO BE ATTACHED TO THE FRAME
! FLEX-TUBES are not included

		GUIDELINE VALUES TABLE FOR CO-CUB							
		760258254 - CO-CUB-S				760258255 - CO-CUB-M			
Loose Tube (LT) Diameter (mm)	CO-CUB capacity (*)	Push length (M)		Pull length (M)		Push length (M)		Pull length (M)	
		3	1	3	1	3	1	3	1
1.2 mm	Tubes / Flex	8	8	8	8	12	12	12	12
	max. Fiber count	576	576	576	576	≥ 864			
1.7 mm	Tubes / Flex	1	2	4	4	6	6	12	12
	max. Fiber count	72	144	288	288	432	432	864	864
2 mm	Tubes / Flex	2	2	4	4	6	6	10	10
	max. Fiber count	144	144	288	288	432	432	720	720
2.5 mm	Tubes / Flex	1	1	2	2	1	4	4	6
	max. Fiber count	72	72	144	144	72	288	288	432
3.5 mm	Tubes / Flex	n/a	1	1	1	1	4	4	4
	max. Fiber count	n/a	72	72	72	n/a	288	288	288

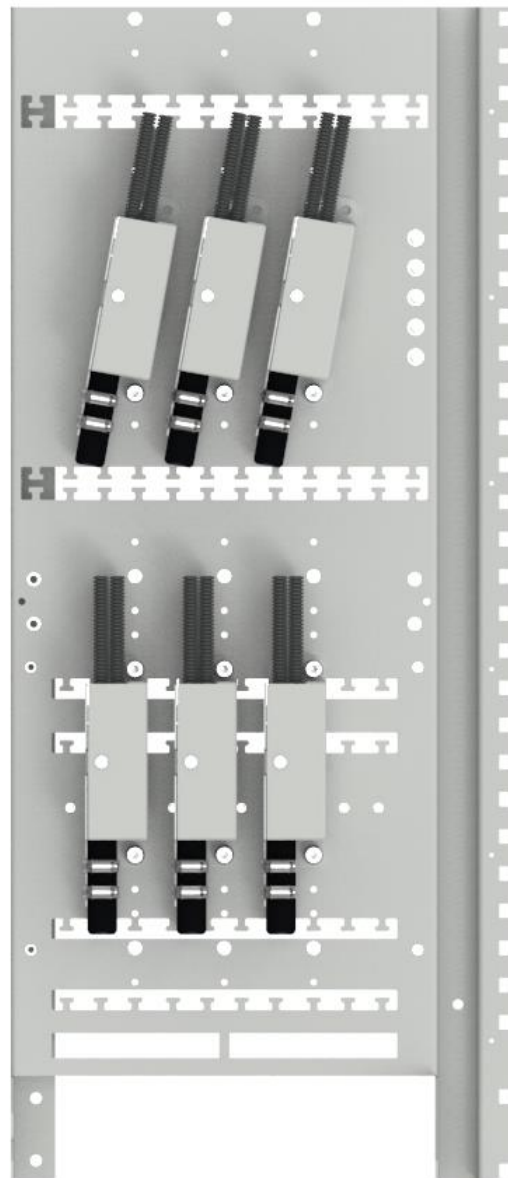
(*) indicative number, depending on loose tube stiffness and smoothness, 12F per Loose Tube.

1. Define the position of the CO-CUB in the frame and mark the stripping point of the cable (the divider can be installed under the raised floor if needed)

FIST-GR3

Example CO-CUB-S positions

Almost all positions are possible, also under an angle.

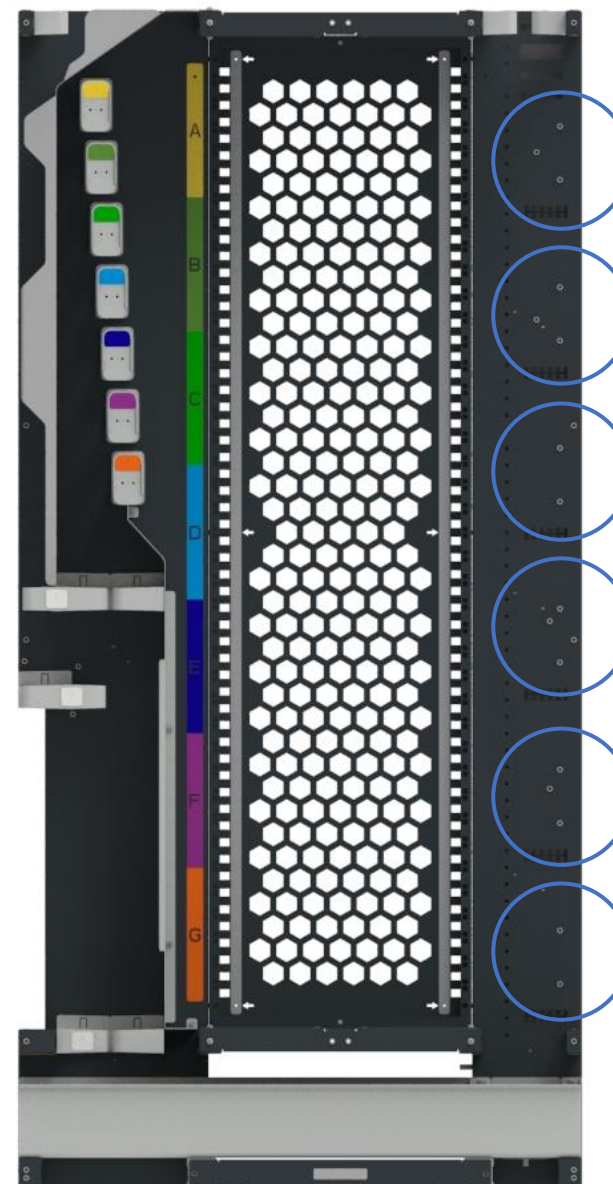


angled fixation

straight fixation

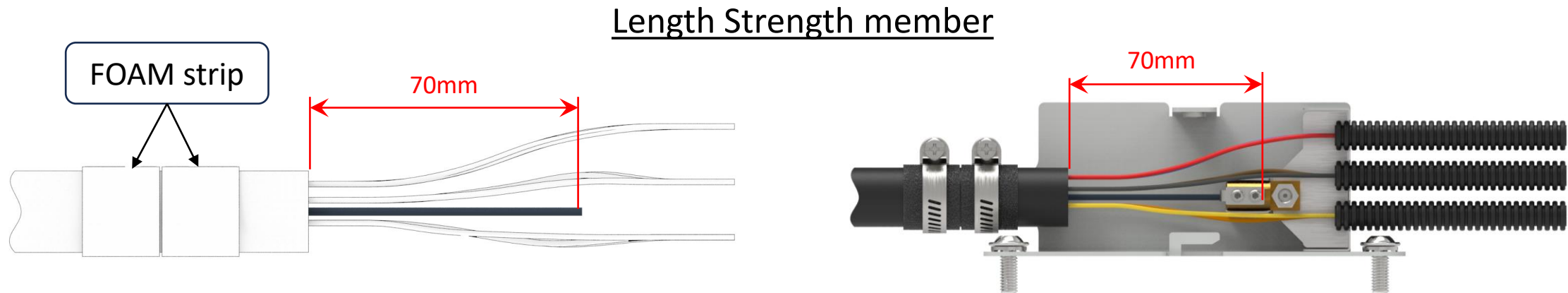
FACT-FRAME

6 positions

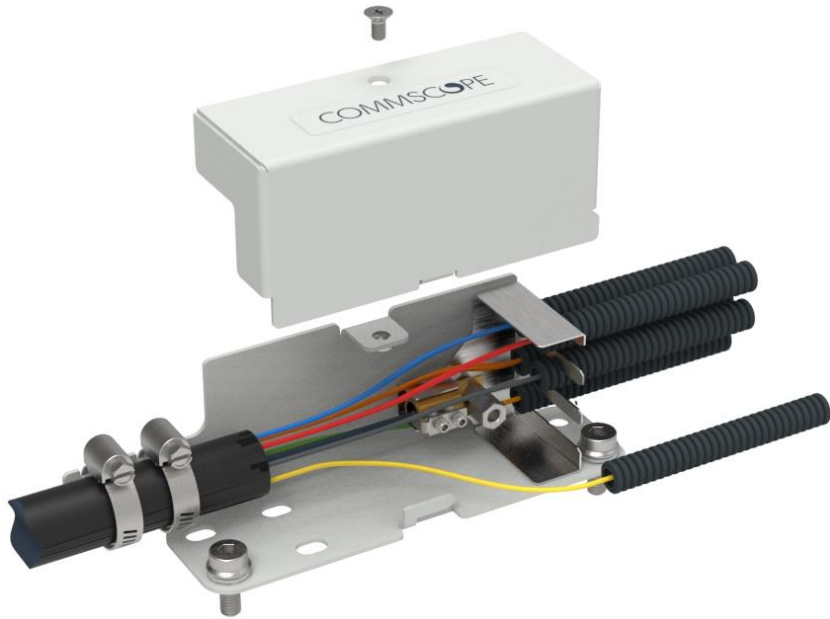


straight fixation

- Strip the jacket and cut the strength member at 70 mm from the end of the jacket, place the foam tape, attach the strength member and mount the cable on the bottom plate.



- Mount the CO-CUB in position and measure the flex tubes. Distribute the subunits (loose tubes) over the necessary flexes and slide them in position, make sure the subunits are routed properly.



- Close the CO-CUB



- Remark:

Provide extra cable fixation on the Frame in case of stiff cable.